



Qulon Mini

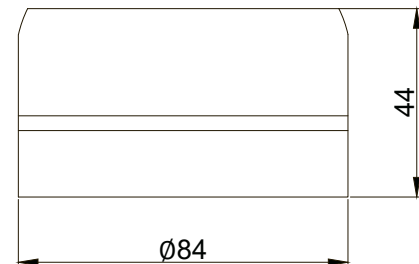
Ultra compact street lighting controller

QULON Mini is a controller for management and diagnostics of street lighting. Mini controls starters and auxiliary modules of the QULON product family and transmits information into operator software. Normally this controller is installed on the surface of a power cabinet but separate installation is also possible. If Mini is mounted on a luminaire case it can use a NEMA socket or direct wiring. In addition to its functionality QULON Mini can also control a single group of luminaires.

Remote management through QULON software: data from connected devices, sensors and meters are collected via RS-485 and transmitted to QULON server by GSM/2G/3G/4G/Nb-IoT. Geo positioning and accurate internal timing are ensured by integrated GPS/GLONASS module.

Key Features

- Ultra compact waterproof IP66 case
- Versions with open wires or NEMA plug
- Withstand voltage up to 305V
- Works with luminaires up to 1000W
- Embedded daylight sensor
- Embedded GPS/GLONASS module
- RS-485 interface
- Wireless communication via GSM/2G/3G/4G/Nb-IoT
- Single luminaire group management
- Remote software updates



QULON CMS

The QULON CMS is an extremely powerful yet flexible lighting management system that allows remote control of lighting infrastructures of any size and sort: We successfully deployed this system to control street lighting in entire cities, highways and tunnels but also industrial and warehouse lighting, airports, livestock farms, greenhouses, parking lots, train stations, leisure centres, parks and many more; It is composed of two different interfaces, a PC software featuring the most advanced programming functions and a web version to monitor and control your lighting assets on the go, together they offer a complete suite of tools for any kind of project and any kind of user.

Qulon Mini

Ultra compact street lighting controller

Version: 1.0
20 Aug 2021

Technical Specifications

Mechanical

Housing: Solid case

Material: Plastic

Dimensions, mm: 84(D) x 44(H) x 84(W)

Mass: 0.2 kg

Mounting: Luminaire case, pillar, etc

Power & Electrical

Input Voltage: ~100-270 VAC, 50/60 Hz or 12-30V

Input Power (max): 5 W

Max load Power: 1000 W

Environmental

Operating Temperature: -40...+70°C

Storage Temperature: -50...+80°C

Operating Relative Humidity (max): 100%

IP Rating: IP66

Certification: CE, RoHS

Warranty: 36 Month (Return to base)

Inputs/ Outputs

Connectors: Wires, NEMA C136.41 plug

Sensors: Embedded daylight sensor

Interfaces and Protocols

Control output interface/protocols: RS-485

Navigation: GPS/GLONASS

Radio Channel: GSM 850/900/1800/1900

Transmit Power Range(s):

Class 4 (+33dBm \pm 2dB) for EGSM 850/900

Class 1 (+30dBm \pm 2dB) for GSM 1800/1900

Configuration/ Indication

Setup: Remote via QULON software

Indication: LED

Package Contents

QULON Mini

Product Line

Name	Modification	Product code
QULON Mini	QULON Mini, 2G, NEMA	QUL-LW-N-2GRS
	QULON Mini, 2G, wire (1.5m)	QUL-LW-W-2GRS
	QULON Mini, 4G,	QUL-LW-N-4GRS
	QULON Mini, 4G, wire (1.5m)	QUL-LW-W-4GRS
	QULON Mini, NB-IoT, NEMA	QUL-LW-N-NBRS
	QULON Mini, NB-IoT, wire (1.5m)	QUL-LW-W-NBRS

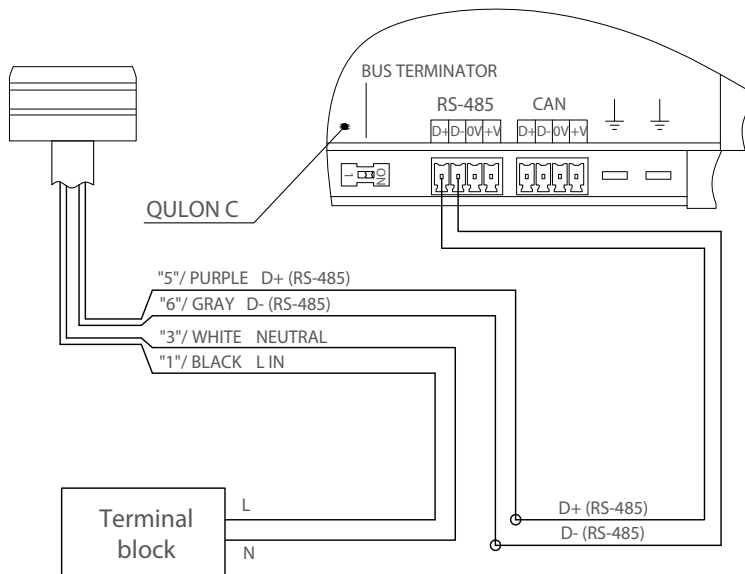
Qulon Mini

Ultra compact street lighting controller

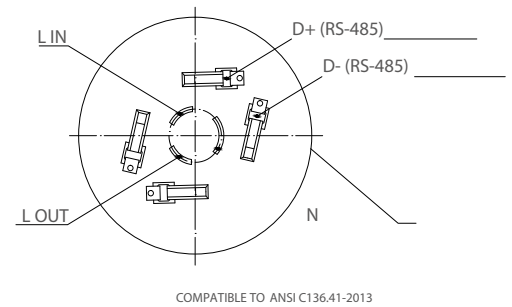
Version: 1.0
20 Aug 2021

Connection Scheme

Wired connection



NEMA connection



Alternative wire colours

N	LIN	LOUT	D+ (RS-485)	D- (RS-485)
Blue	Brown	Yellow and green	White	Black



Disclaimer

To the best of our knowledge, the technical data contained herein is true and accurate at the date of issuance and is subject to change without prior notice. No liability accepted for errors or omissions. Always make sure to use the most recent release and contact Sundrax Electronics to verify correctness before placing your order.

Accessories

Name

- 5-pin NEMA connection socket
- 7-pin NEMA connection socket
- Street light arm mounting kit for cylinder shaped devices
- Pole/wall mounting kit for cylinder shaped devices
- Power cabinet mounting kit for cylinder shaped devices
- Protective cap for cylinder shaped devices

Product code

- ACC-CON-NEMA5
- ACC-CON-NEMA7
- ACC-MK-CB-LBRA
- ACC-MK-CB-LP/W
- ACC-MK-CB-ELCAB
- ACC-PE-CL-LP/W



+ 44 (0) 208 991 33 19
office@sundrax.com
www.sundrax.com