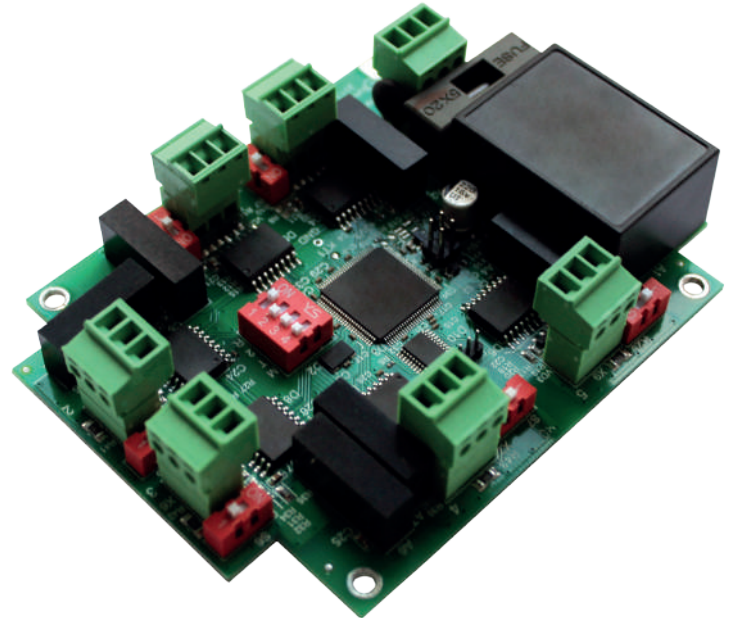




## Splitter Duo Board

### Multi-channel DMX splitter/repeater

Splitter Duo Board is dual-channel device with 6 DMX input/output ports that operates as a regular splitter with 1 input and 5 outputs as well as two separated 1-to-2 splitters. All input and output channels are galvanically isolated from each other. The device is powered by 100-250V industrial AC mains, power consumption is less than 5 watts. Input, output DMX cables, and power cables are connected by terminal blocks.



### Application

Supports bidirectional communication (DMX512 and RDM)

No buttons

OEM board ready for integration into fixtures, furniture, custom cases etc



Supports RDM



UltraStart



Galvanically Isolated Ports



Natural Heat Convection

# Splitter Duo Board

Multi-channel DMX splitter/repeater

Version: 1.00  
10.08.2020

## Technical Specifications

### Mechanical

**Housing:** no  
**Material:** plastic  
**Dimensions, mm:** 103(D) x 19(H) x 79(W)  
**Mass:** 0.15 kg  
**Mounting:** Stage equipment, lighting fixtures, etc.

### Power & Electrical

**Power supply:** ~100-250 VAC, 50/60 Hz  
**Input Power (max):** 5 W  
**Mains Fuse:** 0.5 A

### Environmental

**Operating Temperature:** -40...+60°C  
**Storage Temperature:** -50...+70°C  
**Operating Relative Humidity (max):** 95%  
**IP Rating:** no  
**Certification:** CE, RoHS  
**Warranty:** 36 month (return to base)

### Control / Data Connections

**Supported protocols:** DMX512, RDM  
**DMX data refresh rate:** 44 Hz

### Inputs / Outputs

**DMX input ports:** 1 or 2 isolated  
**DMX output ports:** 4 or 5 isolated  
**DMX connectors:** 15EDGVC terminal blocks

### Configuration / Indication

**Setup:** by DIP switchers  
**Indication:** LED for DMX input

### Package Contents

Splitter Duo Board

## Product Line

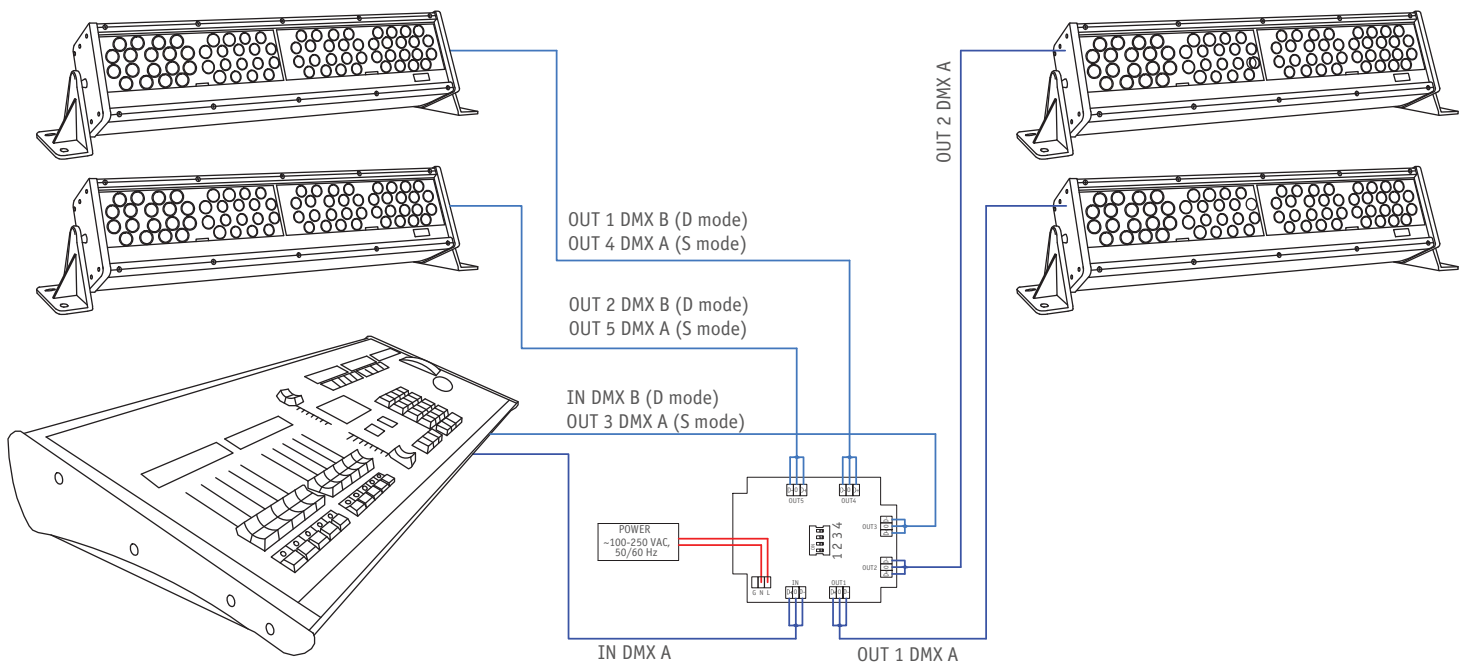
Name	Modification	Product code
Splitter Duo Board	2 DMX input/4 DMX outputs, DC 9-36V	SPAD-0-2D4D-DC-OEM
	2 DMX input/4 DMX output, AC 100-250V	SPAD-0-2D4D-AC-OEM

# Splitter Duo Board

Multi-channel DMX splitter/repeater

Version: 1.00  
10.08.2020

## Connection Scheme



### DIP switcher

	ON	OFF
SW1	RDM enabled	RDM disabled
SW2	Dual splitter mode (D-mode)	Single splitter mode (S-mode)
SW3	Full transparent mode	Dedicated input(s) mode
SW4	Bus indication mode	DMX512 indication mode

### LED indication

	DMX512 mode	BUS mode
Green	Valid DMX signal	Bus is idle
Red	No DMX signal	Bus is busy
Off	Device/Section doesn't work	Device/Section doesn't work