



DMX

Catalogue of Stage Lighting Networking Solutions

Wireless • Ethernet • Powerline • Hybrids
LED & Pixel Drivers • Splitters • LED Drivers



About us

Sundrax is a leading manufacturer of professional hardware and software. The company's mission is to develop innovative, turn-key, fully integrated solutions for almost all areas of the lighting industry. Whatever your requirements are, we are happy to supply you with reliable and project-oriented products for road & street, architectural, and stage lighting management. The biggest theatres and concert halls have chosen our equipment for their permanent installations. Our regular customers are some of the largest touring and rental companies. Today Sundrax is an established innovator, affordably priced with unequalled reliability and worldwide customer service.

DMX via Ethernet

A series of multifunctional devices for bi-directional DMX512-Ethernet converting. Supports wide range of network protocols for DMX data transmission: ArtNet I,II,III,4, sACN draft/release, KiNet v1,v2, RTTrPL.

Various merging modes available: HTP, LTP, Auto, Priority, Backup, Trigger, XFade (see Merging options). Our Ethernet converters are able to merge up to 4 incoming ArtNet/sACN/KiNet/RTTrPL streams in any combination into DMX512 output for perfect show backup. All DMX ports may be used as inputs or outputs. Management by web interface, ArtGate utility, or any standard software supporting ArtNet.

Available as:

- ArtJet PRO: Ethernet-DMX + fiber optic, rack-mounted
- ArtGate PRO: Ethernet-DMX, rack-mounted
- ArtGate Solid: truss mounted Ethernet-DMX nodes
- ArtGate Arma: wall-surface mounted Ethernet-DMX nodes for outdoor use (IP65)
- ArtGate DIN: DIN rail mounted Ethernet-DMX nodes
- ArtGate Compact: wall socket mounted Ethernet-DMX nodes
- ArtGate Board: Ethernet-DMX node as OEM board
- ArtGate PRO Deluxe: 16-port ArtGate PRO



Merging Modes

HTP: highest takes precedence,

LTP: latest takes precedence,

AUTO: last modified takes precedence – smart merging mode,

PRIORITY: for sACN streams with priority tag, console with the highest priority for a given Universe will be in charge,

BACKUP: any network universe or local static scene can be selected for outputting when main source fails,

TRIGGER and X-FADE: switch dynamically between lighting desks, media servers, and other control sources.

Note: Merged data may be outputted to physical DMX ports, and/or looped back to Ethernet as new network universe



Application

Convert DMX512 into ArtNet, sACN, KiNet v1,v2 or RTrPL protocols in both directions to transmit DMX data through Ethernet LAN

Transmit more DMX streams with less cables

Lighting control and management through single network

Convert mapped video content from mapping software into DMX streams

Ensure interfacing between modern stage lighting software and DMX lighting

Real-time control of video projectors and laser units supporting ArtNet or sACN from DMX console

GigaJet Pro

Dmx-Ethernet node with fibre optic link and gigabit switch

Multifunctional rack mounted bidirectional converter, splitter, booster, intelligent merger transmitting DMX/ArtNet/sACN/KiNet/ RTrPL streams in Gigabit Ethernet (10/100/1000 Base-T) and fibre optic networks.

Fibre optic increases maximum length of direct connection between devices up to 2000 meters (using multimode SFP modules), or up to 10 km (using single mode SFP modules). The device also acts as 5-port Ethernet switch working in 10/100/1000BASE-TX networks.



pro series

Environmental

Operating Temperature	0...+60°C
Storage Temperature	-50...+70°C
Operating Relative Humidity (max)	95%
IP Rating	IP20
Certification	CE, RoHS
Warranty	36 Month (Return to base)

Mechanical

Housing	Solid case
Material	Metal
Dimensions, mm	482(D) x 44(H) x 110(W)
Weight	1.2 kg
Mounting	Rack 1 unit

Power & Electrical

Power supply	~100-277 VAC, 50/60 Hz; PoE 802.3af mode A, B
Input power (max)	5 W
Mains Fuse	0.5 A

Control / Data Connections

Supported protocols	DMX512, RDM, ArtNet I, II, III, IV, sACN draft, release, KiNet v1, v2, RTrPL
DMX data refresh rate	44 Hz



Configuration / Indication

Setup	Web interface, software
Indication	LEDs for DMX, Ethernet and SFP activity

Inputs / Outputs

DMX connectors	2x XLR (M), 8x XLR (F) (5-pin)
Ethernet ports	5x RJ-45/ EtherCON 10/100/1000 Base-TX
Fibre Optic connectors	SFP module
Trigger inputs	2

- 8 DMX512 ports (XLR 5-pin, 2 paired)
- Integrated fibre optic port (SFP module)
- Gigabit network switch
- 5 Ethernet ports (EtherCON)
- PoE support
- Maximum surge protection – power supply optimized for voltage from 90 to 315 V
- Simple user-friendly web interface
- Configurable DMX port direction and parameters
- Supported network protocols: ArtNet I,II,III,4, sACN draft/release, KiNet v1,v2, RTrPL
- Full RDM E1.20 support (controller/responder)
- Static scenes (presets) stored in non-volatile memory
- Ability to work as standalone splitter/merger
- Fastest recovery after short power failure
- PowerCON TRUE1 inlet+outlet combination
- Trigger inputs for external events and alarms
- DHCP support
- IP address conflict detection

 UltraStart	 User-Friendly Web Interface	 Natural Heat Convection	 Galvanically Isolated Ports
 Supports RDM	 2 IP addresses per Device	 Back-Up Transmitter	 Power over Ethernet
 Gigabit Ethernet switch	 Trigger Input		

ArtJet Pro

Bidirectional DMX <-> ArtNet/sACN converter, splitter, booster, intelligent merger with fiber optic

Rack mounted ArtJet PRO is smart solution to transmit more DMX universes through single Ethernet LAN 10/100Base-T or fibre 100Base-FX link and especially advantageous for long distance installations to establish safety ring network for data backup. Fibre link enhances length of direct communication between transceivers up to 2000 metres eliminating use of switches or repeaters. Merges two incoming ArtNet streams as well as any combination of ArtNet and DMX streams into DMX output for perfect show backup. All DMX ports may be used as inputs or outputs. Compatible with any hardware and software supporting ArtNet and sACN protocols. Configuration through web-based management page and ArtGate Manager utility.



pro series

Environmental

Operating Temperature	0...+60°C
Storage Temperature	-50...+70°C
Operating Relative Humidity (max)	95%
IP Rating	IP20
Certification	CE, RoHS
Warranty	36 Month (Return to base)

Mechanical

Housing	Solid case
Material	Metal
Dimensions, mm	482(D) x 44(H) x 110(W)
Weight	1.2 kg
Mounting	Rack 1 unit

Power & Electrical

Power supply	-90-250 VAC, 50/60 Hz; PoE
Input Power (max)	5 W
Mains Fuse	0.5 A

Control / Data Connections

Supported protocols	DMX512, RDM, ArtNet I,II,III,4, sACN draft/release, KiNet v1,v2, RTTrPL
Data refresh rate	44 Hz

Configuration / Indication

Setup	Web interface
Indication	LEDs for DMX and Ethernet activity

Inputs / Outputs

DMX ports	8
Connectors	2 paired XLRs (M+F) plus 6 XLRs (F)
Ethernet port	10/100 Base-TX (up to 100m)
Fiber port	100 Base-FX (up to 2000m)
Ethernet connectors	RJ-45/ EtherCon
Fiber Optic connectors	Duplex SC

- PoE support
- Lockable RJ-45 EtherCONS
- Optical fiber connectivity via duplex SC snap-in connectors
- Full protection from dust and smoke
- Maximum surge protection from 100 to 315 V
- Full galvanic isolation of all ports
- Easy installation and programming
- Configurable DMX port direction
- Configurable parameters of DMX signal
- Support network protocols: ArtNet I,II,III,4, sACN draft/release, KiNet v1,v2, RTTrPL
- Variable merging options: HTP, LTP, Auto, Priority, Backup, Trigger, XFade
- Full RDM E1.20 support (controller/responder)
- Static scenes (presets) stored in non-volatile memory
- Works as standalone splitter/merger
- Minimum loading time
- Master IP that never gets lost



ArtGate Pro

Bidirectional converter, splitter, booster, intelligent merger

Rack mounted ArtGate PRO is smart solution to transmit more DMX universes through single Ethernet LAN 10/100Base-T link since most lighting consoles and lighting software in the market already have ArtNet output by default. Merges two incoming ArtNet streams as well as any combination of ArtNet and DMX streams into DMX output for perfect show backup. All DMX ports may be used as inputs or outputs. Compatible with any hardware and software supporting ArtNet and sACN protocols. Configuration is performed through web-based management page and ArtGate Manager utility.



pro series

Environmental

Operating Temperature	0...+60°C
Storage Temperature	-50...+70°C
Operating Relative Humidity (max)	95%
IP Rating	IP20
Certification	CE, RoHS
Warranty	36 Month (Return to base)

Mechanical

Housing	Solid case
Material	Metal
Dimensions, mm	482(D) x 44(H) x 110(W)
Weight	1.2 kg
Mounting	Rack 1 unit

Power & Electrical

Power supply	-90-250 VAC, 50/60 Hz;
Input power (max)	5 W
Mains Fuse	0.5 A

Control / Data Connections

Supported protocols	DMX512, RDM, ArtNet I,II,III,4, sACN draft/release, KiNet v1,v2, RTTrPL
DMX data refresh rate	44 Hz

Configuration / Indication

Setup	Web interface
Indication	LEDs for DMX and Ethernet activity

Inputs / Outputs

DMX ports	4 or 8
Connectors	2 paired XLRs (M+F) plus 2 or 6 XLRs (F) depending on the version
Ethernet port	10/100 Base-TX
Ethernet connectors	RJ-45/ EtherCon

- PoE support
- Lockable RJ-45 EtherCONS
- Full protection from dust and smoke
- Maximum surge protection from 100 to 315 V
- Full galvanic isolation of all ports
- Easy installation and programming
- Configurable DMX port direction
- Configurable parameters of DMX signal
- Support network protocols: ArtNet I,II,III,4, sACN draft/release, KiNet v1,v2, RTTrPL
- Variable merging options: HTP, LTP, Auto, Priority, Backup, Trigger, XFade
- Full RDM E1.20 support (controller/responder)
- Static scenes (presets) stored in non-volatile memory
- Works as standalone splitter/merger
- Minimum loading time
- Master IP that never gets lost



ArtGate Solid

Bidirectional converter, splitter, booster, intelligent merger



Multifunctional converters that translate Ethernet protocols (ArtNet, sACN) into DMX to control more lighting fixtures through single Ethernet LAN 10/100Base-T link. Incredible amount of universes thanks to second Ethernet port adding cascading availability through integrated switch. All DMX ports may be used as inputs or outputs. Compatible with any hardware and software supporting ArtNet and sACN protocols. Configuration through web-based management page and ArtGate Manager utility. Tough and compact metal enclosure (IP44) resistant to dust and smoke. ArtGates Solid may be powered through Ethernet (PoE) without power cabling.



Environmental

Operating Temperature	0...+60°C
Storage Temperature	-40...+70°C
Operating Relative Humidity (max)	95%
IP Rating	IP44
Certification	CE, RoHS
Warranty	36 Month (Return to base)

Mechanical

Housing	Solid case
Material	Metal
Dimensions, mm	171(D) x 55(H) x 121(W)
Weight	1.2 kg
Mounting	Surface, Truss

Power & Electrical

Power supply	-90-250 VAC, 50/60 Hz; PoE
Input Power (max)	5 W
Mains Fuse	0.5 A

Control / Data Connections

Supported protocols	DMX512, RDM, ArtNet I,II,III,4, sACN draft/release, KiNet v1,v2, RTTrPL
DMX data refresh rate	44 Hz

Configuration / Indication

Setup	Web interface
Indication	LEDs for DMX and Ethernet activity

Inputs / Outputs

DMX ports	2 or 4 isolated
Connectors	XLR (M), XLR (F)
Ethernet ports	2 (10/100 Base-TX)
Ethernet connectors	RJ-45/ EtherCon
PoE port	1

- PoE support
- Lockable RJ-45 EtherCONS
- Full protection from dust and smoke
- Maximum surge protection from 100 to 315 V
- Full galvanic isolation of all ports
- Easy installation and programming
- Configurable DMX port direction
- Configurable parameters of DMX signal
- Support network protocols: ArtNet I,II,III,4, sACN draft/release, KiNet v1,v2, RTTrPL
- Variable merging options: HTP, LTP, Auto, Priority, Backup, Trigger, XFade
- Full RDM E1.20 support (controller/responder)
- Static scenes (presets) stored in non-volatile memory
- Works as standalone splitter/merger
- Minimum loading time
- Master IP that never gets lost



ArtGate ARMA

Bidirectional converter, splitter, booster, intelligent merger



Multifunctional waterproof converters perfect for outdoor use. Translate Ethernet protocols (ArtNet, sACN) into DMX to control more lighting fixtures through single Ethernet LAN 10/100Base-T link. Incredible amount of universes thanks to second Ethernet port adding cascading availability through integrated switch. All DMX ports may be used as inputs or outputs. Compatible with any hardware and software supporting ArtNet and sACN protocols. Configuration through web-based management page and ArtGate Manager utility. Tough and compact waterproof metal enclosure (IP65) specifically crafted for outdoor use. ArtGates Arma may be powered through Ethernet (PoE).



Environmental

Operating Temperature	-40...+70°C
Storage Temperature	-50...+80°C
Operating Relative Humidity (max)	100%
IP Rating	IP65 for outdoor use
Certification	CE, RoHS
Warranty	36 Month (Return to base)

Mechanical

Housing	Solid case
Material	Metal
Dimensions, mm	171(D) x 55(H) x 121(W)
Weight	1.2 kg
Mounting	Surface, Truss

Power & Electrical

Power supply	-90-250 VAC, 50/60 Hz; PoE
Input Power (max)	5 W
Mains Fuse	0.5 A

Control / Data Connections

Supported protocols	DMX512, RDM, ArtNet I,II,III,4, sACN draft/release, KiNet v1,v2, RTTrPL
Data refresh rate	44 Hz

Configuration / Indication

Setup	Web interface
Indication	LEDs for DMX and Ethernet activity

Inputs / Outputs

DMX ports	2 or 4
DMX connectors	15EDGVC terminal blocks
Ethernet ports	2 (10/100 Base-TX)
Ethernet connectors	LSA-PLUS® connector
DMX connectors	15EDGVC terminal blocks
PoE port	1

- PoE support
- Full protection from dust and smoke
- Maximum surge protection from 100 to 315 V
- Full galvanic isolation of all ports
- Easy installation and programming
- Configurable DMX port direction
- Configurable parameters of DMX signal
- Support network protocols: ArtNet I,II,III,4, sACN draft/release, KiNet v1,v2, RTTrPL
- Variable merging options: HTP, LTP, Auto, Priority, Backup, Trigger, XFade
- Full RDM E1.20 support (controller/responder)
- Static scenes (presets) stored in non-volatile memory
- Works as standalone splitter/merger
- Minimum loading time
- Master IP that never gets lost



ArtGate DIN

Bidirectional converter, splitter, booster, intelligent merger



DIN mounted multifunctional converters that translate Ethernet protocols (ArtNet, sACN) into DMX to control more lighting fixtures through single Ethernet LAN 10/100Base-T link. Trigger inputs provide ability to launch pre-programmed DMX scenarios when triggers (e.g. fire alarm) are activated even if the console is down.

Two RJ-45 Ethernet inputs and pluggable 15EDGVC terminal blocks for seamless connection. Up to 8 DMX outputs per one device, second Ethernet port adds cascading availability through integrated switch. May be powered through Ethernet (PoE) without power cabling.

DIN
series

Environmental

Operating Temperature	-40...+70°C
Storage Temperature	-50...+80°C
Operating Relative Humidity (max)	95%
IP Rating	IP20
Certification	CE, RoHS
Warranty	36 Month (Return to base)

Mechanical

Housing	DIN mounted case (8 modules)
Material	Metal, Plastic
Dimensions, mm	210(D) x 105(H) x 75(W)
Weight	0.85 kg
Mounting	Power cabinet

Power & Electrical

Power supply	-90-250 VAC, 50/60 Hz
Input power (max)	5 W
Mains Fuse	0.5 A

Control / Data Connections

Supported protocols	DMX512, RDM, ArtNet I,II,III,4, sACN draft/release, KiNet v1,v2, RTTrPL
Data refresh rate	44 Hz

Configuration / Indication

Setup	Web interface
Indication	LEDs for DMX and Ethernet activity

Inputs / Outputs

DMX ports	4 or 8 isolated
DMX connectors	Terminal blocks 15 EDGVC
Ethernet ports	1x or 2x 10/100 Base-TX
Ethernet connectors	RJ-45

PoE support

Full protection from dust and smoke
Maximum surge protection from 100 to 315 V

Full galvanic isolation of all ports

Easy installation and programming

Configurable DMX port direction

Configurable parameters of DMX signal

Support network protocols: ArtNet I,II,III,4, sACN draft/release, KiNet v1,v2, RTTrPL

Variable merging options: HTP, LTP, Auto, Priority, Backup, Trigger, XFade

Full RDM E1.20 support (controller/responder)

Static scenes (presets) stored in non-volatile memory

Works as standalone splitter/merger

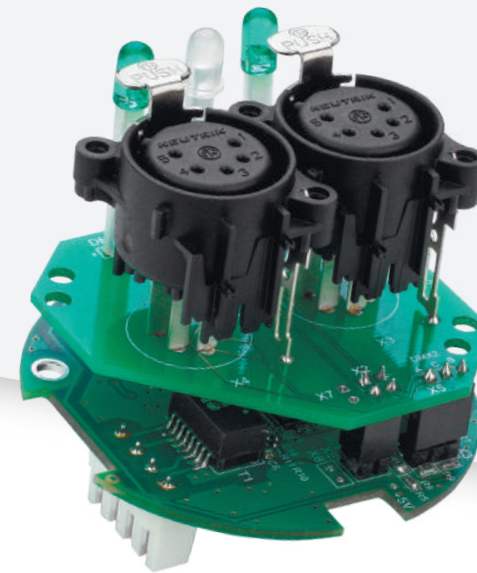
Minimum loading time

Master IP that never gets lost



ArtGate Compact

Bidirectional converter, booster, intelligent merger



Ultra-small DMX<->ArtNet/sACN converter for installation into wall sockets, stage equipment, lighting fixtures. ArtGate Compact converts DMX512 to ArtNet/sACN in both directions. Various merging modes available: HTP, LTP, AUTO, PRIORITY, OVERLAY. Supplied in 1-port and 2-port modifications (inputs or outputs).

Compatible with any hardware and software supporting ArtNet and sACN protocols. Configuration is performed through web-based management page. Available as OEM board to be integrated into your fixtures and installations

Compact
series

Environmental

Operating Temperature	0...+60°C
Storage Temperature	-50...+70°C
Operating Relative Humidity (max)	95%
IP Rating	IP20
Certification	CE, RoHS
Warranty	36 Month (Return to base)

Mechanical

Housing	No
Dimensions, mm	60(D) x 60(H) x 55(W)
Weight	0.15 kg
Mounting	Outlet box

Power & Electrical

Power supply	PoE
Input power (max)	1 W

Control / Data Connections

Supported protocols	ArtNet I,II,III,4, sACN draft/release, KiNet v1,v2, RTTrPL
Data refresh rate	44 Hz

Configuration / Indication

Setup	Web interface
Indication	LEDs for DMX and Ethernet activity

Inputs / Outputs

DMX ports	1 or 2
DMX connectors	1 XLR(M), 1 XLR(F)
Ethernet port	10/100 Base-TX
Ethernet connectors	LSA-PLUS® connector

PoE support

Easy installation and programming

Configurable DMX port direction

Configurable parameters of DMX signal

Support network protocols: ArtNet I,II,III,4, sACN draft/release, KiNet v1,v2, RTTrPL

Variable merging options: HTP, LTP, Auto, Priority, Backup, Trigger, XFade

Full RDM E1.20 support (controller/responder)

Master IP that never gets lost



ArtGate Pro Deluxe

Bidirectional converter, splitter, booster, intelligent merger

ArtGate is a series of multifunctional devices for bi-directional DMX512-ArtNet/sACN converting. DMX512 data streams received by ArtGate Pro Deluxe are transmitted through Ethernet LAN in 10/100 Base-T mode and vice versa.

Compatibility with ArtNet and sACN protocols makes it easy to incorporate ArtGates into networks containing devices from other manufacturers. Deluxe sub-series is Sundrax's specialty for 2-unit rack mountable ArtGates with 16 DMX ports.



pro
series

Environmental

Operating Temperature	0...+60°C
Storage Temperature	-50...+70°C
Operating Relative Humidity (max)	95%
IP Rating	IP20
Certification	CE, RoHS
Warranty	36 Month (Return to base)

Mechanical

Housing	Solid case
Material	Metal
Dimensions, mm	482(D) x 88(H) x 220(W)
Weight	1.27 kg
Mounting	Rack 2 unit

Power & Electrical

Power supply	~90-250 VAC, 50/60 Hz
Input power (max)	5 W
Mains Fuse	0.5 A

Control / Data Connections

Supported protocols	ArtNet I, II, III/ sACN, DMX512, RDM
Data refresh rate	44 Hz

Configuration / Indication

Setup	Web interface
Indication	LEDs for DMX and Ethernet activity

Inputs / Outputs

DMX ports	16
Connectors	16 XLR(F)
Ethernet port	10/100 Base-TX
Ethernet connectors	RJ-45/ EtherCon

- Easy installation and programming
- Saves profiles
- Master IP (never gets lost)
- Simple web interface
- Galvanic isolation of all ports
- Merging modes: HTP, LTP, AUTO, PRIORITY
- Configurable parameters of DMX signal
- Configurable DMX port direction



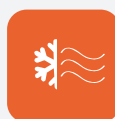
UltraStart



DMX Bi-Direct



User-Friendly Web Interface



Natural Heat Convection



2 IP addresses per Device



Supports RDM



Galvanically Isolated Ports

Fibre / Ethernet Switches

Professional fibre/ethernet gigabit switches designed and configured specifically for lighting industry. Perfect both for permanent installations and touring, these rack-mounted switches are using all protocols common for lighting industry and providing simple configuration tools intelligible even without deep knowledge in networking.

ArtLAN Pro

Fiber/Ethernet Gigabit switch for pro lighting industry

ArtLAN is professional quality switch designed specifically for pro lighting industry. Providing reliable Ethernet switching functionality, ArtLANs are equipped with eight RJ-45/EtherCON lockable ports for 10/100/1000 Mbps communication and two 2500 Mbps SFP interconnects for fiber optic connection. SFP provides opportunity to connect a wide variety of fiber cables in order to extend switching functionality throughout the network.

Neutrik PowerCON locking AC connector provides a very rugged solution in combination with a locking device in order to guarantee a safe power connection. All Ethernet ports are Power-over-Ethernet (PoE) compatible.



pro
series

Environmental

Operating Temperature	0...+60°C
Storage Temperature	-50...+70°C
Operating Relative Humidity (max)	95%
IP Rating	IP20
Certification	CE, RoHS
Warranty	36 Month (Return to base)

Mechanical

Housing	Solid case
Material	Metal
Dimensions, mm	482(D) x 44(H) x 220(W)
Weight	1.6 kg
Mounting	Rack 1 unit

Power & Electrical

Power supply	~90-250 VAC, 50/60 Hz; PoE
Input Power (max)	5 W
Mains Fuse	0.5 A

Control / Data Connections

Supported protocols	DMX512, RDM
DMX data refresh rate	44 Hz

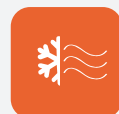
Configuration / Indication

Setup	Web interface
Indication	LEDs for Ethernet and PoE activity

Inputs / Outputs

Ethernet ports	8 (RJ-45/etherCon), 10/100/1000 Base-TX
Fiber Optic connectors	2 SFP

- PoE available on all ports
- Simple web interface
- Easy installation and programming
- 10/100/1000 Mbps data transmission
- Optical fiber connectivity via SFP interconnects
- Ethernet connectivity via lockable RJ-45 EtherCONS



Natural Heat Convection



User-Friendly Web Interface



Power over Ethernet

Wireless Transceivers and Hybrids (DMX or DMX+Ethernet)

RadioGates are designed to transfer DMX/RDM or ArtNet I, II, III, IV/ sACN, DMX512, RDM, KiNet, RTrPL data wirelessly in intellectual lighting control systems through Sundrax's BeDMX technology (2.4 GHz).

One of the most useful features of RadioGates is backup availability. Even if one transmitter goes down, a backup transmitter within seconds takes over the job, automatically establishing connection with his predecessor's group of receivers.

Another great feature implemented in RadioGates is memorizing of last saved connection settings. You don't have to configure them every time you turn them on. You create a network with RadioGates, this configuration is automatically saved and when you move to another event, just turn these devices on and they will connect to each other automatically.

Our wireless transceivers were designed for professional use by touring companies and are ready to work in severe weather conditions. We produce them in solid metal housing (IP44 for indoor installations, and IP65 for outdoor). They perfectly function in a wide temperature range between -40°C and +65°C.

RadioGate Solid (DMX)

Wireless DMX transceiver



Provide non-stop bidirectional DMX communication between devices in in 2.4 GHz ISM with RDM feedback up to 1500 metres with enhanced antennas. Adaptive Frequency Hopping (AFH) helps to avoid disturbance from any other wireless equipment. All RadioGates are versatil transmitter+receiver, with one-button configuration.

Packed into roadworthy die-cast metal cases, fully protected from fog and smoke, with galvanically isolated ports, RadioGate Solid is smart choice when wired DMX transmission is hindered. Available as ArtNet/sACN modification and IP65 waterproof case for outdoor application (RadioGate Arma).

Solid
series

>be
DMX

Environmental

Operating Temperature	0...+60°C
Storage Temperature	-40...+70°C
Operating Relative Humidity (max)	95%
IP Rating	IP44
Certification	CE, RoHS
Warranty	36 Month (Return to base)

Mechanical

Housing	Solid case
Material	Metal
Dimensions, mm	115(D) x 55(H) x 90(W)
Weight	0.85 kg
Mounting	Surface, Truss
Connectors	2 XLR(M), 2 XLR(F)

Power & Electrical

Power supply	-90-250 VAC, 50/60 Hz or 12-24 VDC
Max current consumption	0.1 A
Mains Fuse	0.5 A (VAC modification)

Control / Data Connections

Supported protocols	DMX512, RDM
DMX data refresh rate	44 Hz
Transmission range (standard antenna)	200m
Communication protocol	Bluetooth 5.0
RF band	2.4 GHz

Configuration / Indication

Setup	Buttons
Indication	LEDs for DMX activity

Inputs / Outputs

Wireless channels	1
DMX ports	1 isolated

Designed for touring/ rental companies

Simple configuration

DC or AC power source

1 button programming

Full galvanic isolation

Support DMX512, RDM

Bidirectional communication

Resistance to interference

Up to 1500m transmission range

Neutrik® XLR metal connectors

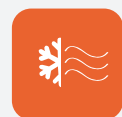
Lost data replacement



UltraStart



DMX Bi-Direct



Natural Heat Convection



Galvanically Isolated Ports



Supports RDM



Back-Up Transmitter



High Ingress Protection

RadioGate Solid (DMX+Ethernet)

Wireless DMX/ArtNet/sACN transceiver



Hybrid DMX-ArtNet/sACN converter using Ethernet LAN 10/100Base-T to transmit DMX signal and providing hot backup through wireless 2.4 GHz channels. Smart choice for touring as a spare device that covers both transmission technologies. Packed into roadworthy die-cast metal cases, fully protected from fog and smoke, with galvanically isolated ports.

Compatible with any hardware and software supporting ArtNet and sACN protocols.

Wireless transmission up to 1500 metres distance with enhanced antennas. Adaptive Frequency Hopping (AFH) helps to avoid disturbance from any other wireless equipment.

Solid
series

>be
DMX

Environmental

Operating Temperature	0...+60°C
Storage Temperature	-40...+70°C
Operating Relative Humidity (max)	95%
IP Rating	IP44
Certification	CE, RoHS
Warranty	36 Month (Return to base)

Mechanical

Housing	Solid case
Material	Metal
Dimensions, mm	171(L) x 55(H) x 121(W)
Weight	1.2 kg
Mounting	Surface, Truss

Power & Electrical

Power supply	-90-250 VAC, 50/60 Hz 12-24 VDC
Max current consumption	0.1 A
Mains Fuse	0.5 A (VAC modification)

Control / Data Connections

Supported protocols	ArtNet I, II, III, IV/ sACN, DMX512, RDM, KiNet, RTTrPL
DMX data refresh rate	44 Hz
Transmission range (standard antenna)	200m
Communication protocol	Bluetooth 5.0
RF band	2.4 GHz

Configuration / Indication

Setup	Web interface
Indication	LEDs for DMX, beDMX and Ethernet activity

Inputs / Outputs

Wireless channels	2
Ethernet port	10/100 Base-TX
Ethernet connectors	RJ-45/ EtherCon
DMX ports	2 or 4 isolated

Designed for touring/rental companies

Simple configuration

DC or AC power source

1 button programming

Support network protocols: ArtNet I,II,III,4, sACN draft/release, KiNet v1,v2, RTTrPL

Variable merging options: HTP, LTP, Auto, Priority, Backup, Trigger, XFade

Bidirectional communication

Resistance to interference

Up to 1500m transmission range

Neutrik® etherCON metal connectors

Lost data replacement



UltraStart



User-Friendly Web Interface



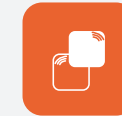
Natural Heat Convection



Galvanically Isolated Ports



2 IP addresses per Device



Back-Up Transmitter



High Ingress Protection

RadioGate ARMA

Wireless DMX transceiver



Provide non-stop bidirectional DMX communication between devices in in 2.4 GHz ISM with RDM feedback up to 1500 metres with enhanced antennas. Adaptive Frequency Hopping (AFH) helps to avoid disturbance from any other wireless equipment. All RadioGates are versatile transmitter+receiver, with one-button configuration.

Packed into waterproof metal enclosure (IP65) specifically crafted for outdoor use, with galvanically isolated ports, RadioGate Solid is smart choice when wired DMX transmission is hindered. Available as DMX and ArtNet/sACN modifications in IP44 casing for indoor application (RadioGate Solid).

ARMA
series

>be
DMX

Environmental

Operating Temperature	-40...+70°C
Storage Temperature	-50...+80°C
Operating Relative Humidity (max)	100%
IP Rating	IP65 for outdoor use
Certification	CE, RoHS
Warranty	36 Month (Return to base)

Mechanical

Housing	Solid case
Material	Metal
Dimensions, mm	115(D) x 55(H) x 90(W)
Weight	0.85 kg
Mounting	Surface, Truss

Power & Electrical

Power supply	~90-250 VAC, 50/60 Hz or 12-24 VDC
Max current consumption	0.1 A
Mains Fuse	0.5 A (VAC modification)

Control / Data Connections

Supported protocols	DMX512, RDM
DMX data refresh rate	44 Hz
Transmission range (standard antenna)	200m
Communication protocol	Bluetooth 5.0
RF band	2.4 GHz

Configuration / Indication

Setup	Buttons
Indication	LEDs for DMX

Inputs / Outputs

Wireless channels	1 or 2
DMX ports	1 or 2 isolated
DMX connectors	15EDGVC terminal blocks

- Designed for touring/ rental companies
- Simple configuration
- DC or AC power source
- 1 button programming
- Full galvanic isolation
- Support DMX512, RDM
- Bidirectional communication
- Resistance to interference
- Up to 1500m transmission range
- Neutrik® XLR metal connectors
- Lost data replacement



CrossGate Pro

Bidirectional converter, splitter, booster intelligent merger



pro
series

Rack mounted hybrid DMX-ArtNet/sACN converter using Ethernet LAN 10/100Base-T to transmit DMX signal and providing hot backup through wireless 2.4 GHz channels. Smart choice for touring as a spare device that covers both transmission technologies. Various merging modes available: HTP, LTP, AUTO, PRIORITY, OVERLAY.

Compatible with any hardware and software supporting ArtNet and sACN protocols. Wireless transmission with RDM feedback up to 1500 metres distance with enhanced antennas. Adaptive Frequency Hopping (AFH) helps to avoid disturbance from any other wireless equipment.

Environmental

Operating Temperature	0...+60°C
Storage Temperature	-50...+70°C
Operating Relative Humidity (max)	95%
IP Rating	IP20
Certification	CE, RoHS
Warranty	36 Month (Return to base)

Mechanical

Housing	Solid case
Material	Metal
Dimensions, mm	482(D) x 44(H) x 110(W)
Weight	1.2 kg
Mounting	Rack 1 unit

Power & Electrical

Power supply	~90-250 VAC, 50/60 Hz
Input power (max)	5 W
Mains Fuse	0.5 A

Control / Data Connections

Supported protocols	ArtNet I, II, III/ sACN, DMX512, RDM
DMX data refresh rate	44 Hz
Transmission range (standard antenna)	100m
Communication protocol	Bluetooth 5.0
RF band	2.4 GHz

Configuration / Indication

Setup	Web interface
Indication	LEDs for DMX and Ethernet activity

Inputs / Outputs

BeDMX ports	4
Connectors	4 XLR (M+F)
Ethernet port	10/100 Base-TX
Ethernet connectors	RJ-45

>be
DMX

- Easy installation and programming
- Saves profiles
- Master IP (never gets lost)
- Simple web interface
- Galvanic isolation of all ports
- Variable merging options: HTP, LTP, Auto, Priority, Backup, Trigger, XFade
- Configurable parameters of DMX signal
- Configurable DMX port direction



>be DMX

Wireless DMX / ArtNET / sACN

BeDMX is wireless technology by Sundrax Electronics specifically developed for wireless DMX/RDM or ArtNet I, II, III, IV/ sACN, DMX512, RDM, KiNet, RTTrPL transceivers RadioGates as well as LED drivers and DMX splitters. BeDMX works in international license free 2.4 GHz ISM band based on Bluetooth 5.0 protocol.

BeDMX technology provides bidirectional communication ensuring high resistance to interference with Adaptive Frequency Hopping (AFH) and long-range transmission up to 1500 m. AFH helps to avoid disturbance from any other wireless equipment by a hop rate of 1600 hops per second so you stay calm and sure that your installation works with no surprises.

DMX Splitters

Series of multifunctional rack or truss mountable splitters for larger DMX networks boosting the signal to create a network of 5 or 10 additional DMX lines from DMX input. All input and output channels have full galvanic isolation. Remote Device Management (RDM) compatible. The devices are suitable for indoor or outdoor use. Power consumption is less than 5 watts.

Splitter Pro

Multi-channel DMX512 splitter/repeater

Splitter PRO is a series of multifunctional rack mountable splitters for larger DMX networks boosting the signal to create a network of 5 or 10 additional DMX lines from DMX input. All input and output channels have full galvanic isolation. Remote Device Management (RDM) compatible. The device is suitable for indoor use and rack mountable. Splitters are powered by 100-250V industrial AC mains, power consumption is less than 5 watts.



pro
series

Environmental

Operating Temperature	0...+60°C
Storage Temperature	-50...+70°C
Operating Relative Humidity (max)	95%
IP Rating	IP20
Certification	CE, RoHS
Warranty	36 Month (Return to base)

Mechanical

Housing	Small depth rack mounted
Material	Metal
Dimensions, mm	482(D) x 44(H) x 110(W)
Weight	1.2 kg
Mounting	Rack 1 unit

Power & Electrical

Power supply	~90-250 VAC, 50/60 Hz
Input power (max)	5 W
Mains Fuse	0.5 A

Control / Data Connections

Supported protocols	DMX512, RDM
DMX data refresh rate	44 Hz

Configuration / Indication

Indication	LEDs for DMX inputs
------------	---------------------

Inputs / Outputs

DMX inputs	1
DMX outputs	5 or 10
Connectors	XLR or EtherCON

No buttons
Ethercon or XLR (customer request)
100% input data reservation
Input back up function



UltraStart



DMX Bi-Direct



Natural Heat Convection



Galvanically Isolated Ports



Supports RDM

Splitter Pro DUO

Multi-channel double input DMX512 splitter/repeater

Splitter DUO PRO is special device with 3 DMX inputs and 8 DMX outputs that operates as a regular splitter with 1 input and 8 outputs as well as two separated 1-to-4 splitters with fail-safe option. All input and output channels have full galvanic isolation. Remote Device Management (RDM) compatible. The device is suitable for indoor use and rack mountable. Splitters are powered by 100-250 V industrial AC mains, power consumption is less than 5 watts.



pro
series

Environmental

Operating Temperature	0...+60°C
Storage Temperature	-50...+70°C
Operating Relative Humidity (max)	95%
IP Rating	IP20
Certification	CE, RoHS
Warranty	36 Month (Return to base)

Mechanical

Housing	Small depth rack mounted
Material	Metal
Dimensions, mm	482(D) x 44(H) x 110(W)
Weight	1.2 kg
Mounting	Rack 1 unit

Power & Electrical

Power supply	~90-250 VAC, 50/60 Hz,
Input power (max)	5 W
Mains Fuse	0.5 A

Control / Data Connections

Supported protocols	DMX512, RDM
DMX data refresh rate	44 Hz

Configuration / Indication

Indication	LEDs for DMX inputs
------------	---------------------

Inputs / Outputs

DMX inputs	1 or 3
DMX outputs	8 or 10
Connectors	XLR

No buttons
Ethercon or XLR (customer request)
100% input data reservation
Single or double input modes
Input back up function



UltraStart



DMX Bi-Direct



Natural Heat Convection



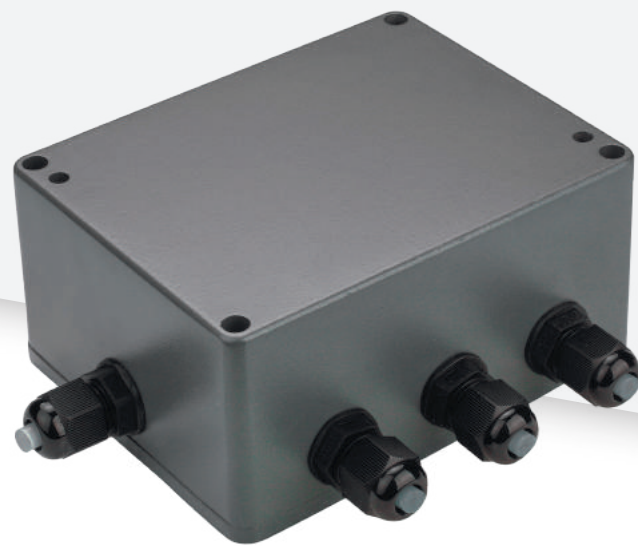
Galvanically Isolated Ports



Supports RDM

Splitter ARMA DUO

Double input DMX-512 splitter/repeater with five outputs



Splitter Arma DUO is double input device with 6 DMX input/output ports that operates as a regular splitter with 1 input and 5 outputs as well as two separated 1-to-2 splitters.

All input and output channels are mutually galvanically isolated. The device is suitable for outdoor use and has the highest levels of dust and moisture protection. The device is powered by 100-250V industrial AC mains, power consumption is less than 5 watts. Input, output DMX cables and power cable are connected to the device body via cable glands.



Environmental

Operating Temperature	-40...+70°C
Storage Temperature	-50...+80°C
Operating Relative Humidity (max)	100%
IP Rating	IP65
Certification	CE, RoHS
Warranty	36 Month (Return to base)

Mechanical

Housing	Solid case
Material	Metal
Dimensions, mm	115(D) x 55(H) x 90(W)
Weight	0.85 kg
Mounting	Surface, Truss

Power & Electrical

Power supply	~90-250 VAC, 50/60 Hz,
Input Power (max)	5 W
Mains Fuse	0.5 A

Control / Data Connections

Supported protocols	DMX512, RDM
DMX data refresh rate	44 Hz

Configuration / Indication

Setup	by DIP switchers
Indication	LED for DMX input

Inputs / Outputs

DMX input ports	1 or 2 isolated
DMX output ports	4 or 5 isolated
DMX connectors	15EDGVC terminal blocks

- 100% input data reservation
- Single or double input modes
- Input back up function
- Die-cast, waterproof metal casing (IP65)
- No buttons
- Time-tested in severe weather conditions
- Surface/truss mount



Splitter Solid DUO

Splitter with single/double input modes



Splitter Solid DUO is special device with 2 DMX inputs and 4 DMX outputs that operates as a regular splitter with 1 input and 5 outputs as well as two separated 1-to-2 splitters. All input and output channels have full galvanic isolation. Remote Device Management (RDM) compatible.

The device is suitable for indoor use. Splitters are powered by 100-250 V industrial AC mains, power consumption is less than 5 watts.



Environmental

Operating Temperature	0...+60°C
Storage Temperature	-50...+70°C
Operating Relative Humidity (max)	95%
IP Rating	IP44
Certification	CE, RoHS
Warranty	36 Month (Return to base)

Mechanical

Housing	Solid case
Material	Metal
Dimensions, mm	171(D) x 55(H) x 121(W)
Weight	1.2 kg
Mounting	Surface, Truss

Power & Electrical

Power supply	~90-250 VAC, 50/60 Hz,
Input power (max)	5 W
Mains Fuse	0.5 A (VAC modification)

Control / Data Connections

Supported protocols	DMX512, RDM
DMX data refresh rate	44 Hz

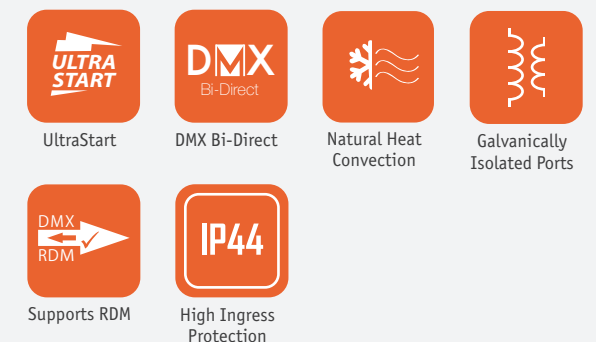
Configuration / Indication

Indication	LEDs for DMX inputs activity
------------	------------------------------

Inputs / Outputs

DMX inputs	1 or 2
DMX outputs	5 or 4
Connectors	XLR

- Supports bidirectional communication (DMX512 and RDM)
- Surface/truss mount
- 100% input data reservation
- Input back up function
- Single or double input modes



Splitter DIN DUO

Splitter with single/double input modes



Splitter DIN DUO is special DIN rail mount device with 6 DMX input/output ports that operates as a regular splitter with 1 input and 5 outputs as well as two separated 1-to-2 splitters. All input and output channels have full galvanic isolation. Remote Device Management (RDM) compatible. The device is suitable for indoor use. Splitter is powered by 100-250 V industrial AC mains, power consumption is less than 5 watts.

DIN
series

Environmental

Operating Temperature	-40...+70°C
Storage Temperature	-50...+80°C
Operating Relative Humidity (max)	95%
IP Rating	IP20
Certification	CE, RoHS
Warranty	36 Month (Return to base)

Mechanical

Housing	DIN mounted case (8 modules)
Material	Metal, Plastic
Dimensions, mm	142(D) x 105(H) x 75(W)
Weight	0.45 kg
Mounting	DIN rail

Power & Electrical

Power supply	~90-250 VAC, 50/60 Hz,
Input Power (max)	5 W
Mains Fuse	0.5 A

Control / Data Connections

Supported protocols	DMX512, RDM
DMX data refresh rate	44 Hz

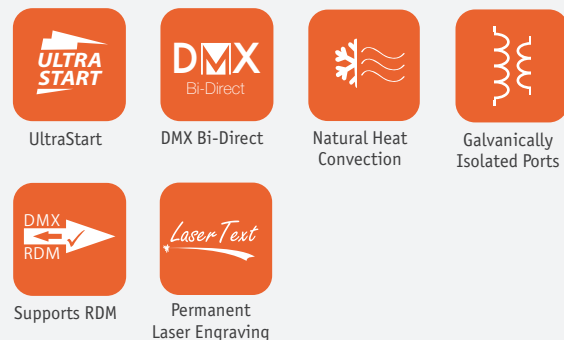
Configuration / Indication

Indication	LED for DMX inputs activity
------------	-----------------------------

Inputs / Outputs

DMX input ports	1 or 2
DMX output ports	4 or 5
DMX connectors	Terminal blocks 15 EDGVC

- 100% input data reservation
- Input back up function
- Supports bidirectional communication (DMX512 and RDM)
- Single or dual input modes
- Full galvanic isolation on all ports



Wireless Splitter Pro

Multi-channel DMX512 splitter/repeater

Wireless Splitter PRO is a series of multifunctional rack mountable splitters for larger DMX networks boosting the signal to create a network of 5 or 10 additional DMX lines from BeDMX and DMX inputs. BeDMX is hi-end technology for transmission between devices in 2.4 GHz ISM band with bidirectional communication and Adaptive Frequency Hopping (AFH) which guarantees near 100% resistance to radio frequency interference by a hop rate of 1600 hops per second. All ports have full galvanic isolation. Remote Device Management (RDM) compatible. The device is suitable for indoor use and rack mountable. Splitters are powered by 100-250V industrial AC mains, power consumption is less than 5 watts.



pro
series

Environmental

Operating Temperature	0...+60°C
Storage Temperature	-50...+70°C
Operating Relative Humidity (max)	95%
IP Rating	IP20
Certification	CE, RoHS
Warranty	36 Month (Return to base)

Mechanical

Housing	Small depth rack mounted
Material	Metal
Dimensions, mm	482(D) x 44(H) x 110(W)
Weight	1.2 kg
Mounting	Rack 1 unit

Power & Electrical

Power supply	~90-250 VAC, 50/60 Hz
Input power (max)	5 W
Mains Fuse	0.5 A

Control / Data Connections

Supported protocols	DMX512, RDM, BeDMX
DMX data refresh rate	44 Hz

Configuration / Indication

Indication	LEDs for DMX and BeDMX status
------------	-------------------------------

Inputs / Outputs

BeDMX inputs	1
DMX outputs	5 or 10
Connectors	XLR or EtherCON

- Designed for touring/ rental companies
- No buttons
- Ethercon or XLR (customer request)
- 100% input data reservation
- Input back up function
- Bidirectional communication
- Resistance to interference
- Up to 1500m transmission range



DMX via Powerline

Series of transceivers exploiting existing powerlines (110V/220V) to transmit DMX signal using PWRDMX technology that was developed by Sundrax. Unique PowerGate devices are mostly used in architectural lighting, however, sometimes it is viable to use them in touring/rental industry, and even for indoor lighting controls. PWRDMX and PowerGate device unveil hidden potential of existing wiring network, eliminating the need of new cabling.

100% reliable, low-noise and highspeed bi-directional DMX communication between PowerGate devices and lighting fixtures provide unlimited network topology.

PowerGate ARMA

DMX512 transceiver via 220/110V



DMX transceivers employing existing powerlines (110V/220V) to transmit DMX signal using PWRDMX technology introduced by Sundrax in 2007. Perfect solution if new cabling or wireless transmission is hindered or impossible e.g. conversion to DMX lighting for historic facades, architectural monuments, landmarks, in-ground lighting.

Powergates support ArtNet and sACN input through single Ethernet LAN 10/100Base-T link and have up to 4 DMX outputs. DMX ports are configurable through web-based management page. All PowerGates may be configured as transmitters or receivers. Tough and compact waterproof metal enclosure (IP65) specifically crafted for outdoor use.

ARMA
series

**PWR
DMX**

Environmental

Operating Temperature	-0...+60°C
Storage Temperature	-50...+70°C
Operating Relative Humidity (max)	95%
IP Rating	IP65
Certification	CE, RoHS
Warranty	36 Month

Mechanical

Housing	Solid case
Material	Metal
Dimensions, mm	171(D) x 55(H) x 121(W)
Weight	0.85 kg
Mounting	Surface, Truss

Power & Electrical

Power supply	~90-270 VAC, 50/60 Hz, PoE
Input Power (max)	5 W
Mains Fuse	0.1 A

Control / Data Connections

Supported protocols	ArtNet I,II,III,4; sACN; DMX512; RDM; PWRDMX
DMX data refresh rate	44 Hz

Configuration / Indication

Setup	Web-interface
Indication	LEDs for DMX activity

Inputs / Outputs

DMX ports	1 or 4 isolated
DMX connectors	15EDGVC terminal blocks
Ethernet port	2 (10/100 Base-TX)
Ethernet connector	RJ-45

PoE support

Ethernet port for web configuration and ArtNet/sACN data transmission

Minimum loading time, fastest recovery after short power failure

Full protection from dust and smoke increases product lifetime

Simple user-friendly web interface

Maximum surge protection (100-315 V)

DMX512 via 220/110V transceiver

Die-cast metal casing (IP65)

No buttons

Full galvanic isolation

Up to 400 m transmission range

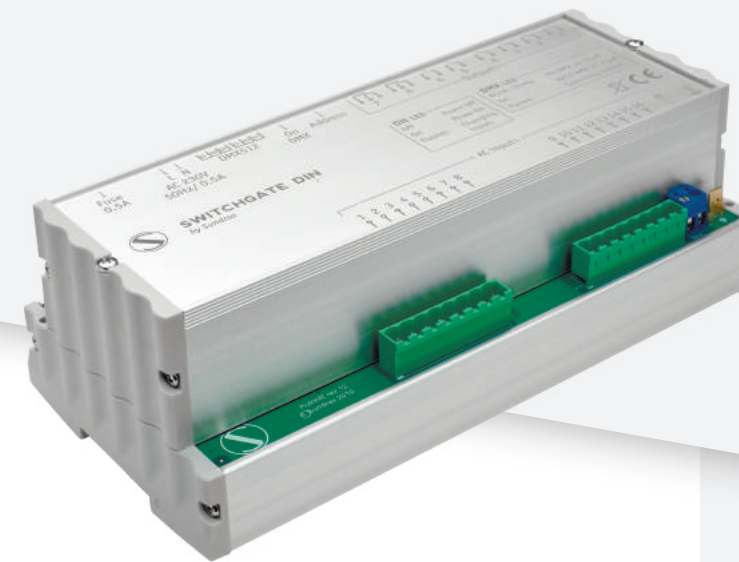


DMX Relay Switches

DMX Relay Switches with enhanced functionality. Able to switch 8 power circuits on and off by DMX commands, device provides a diagnostic feedback from up to 16 AC inputs via standard RDM communication.

SwitchGate DIN

DMX switcher



SwitchGate DIN is DMX switcher with enhanced functionality. Able to switch 8 power circuits on and off by DMX commands, device provides a diagnostic feedback from up to 16 AC inputs via standard RDM communication. Mounted on standard DIN-rail, SwitchGate operates in power networks without any intermediate components.

DIN
series

Environmental

Operating Temperature	-40...+70°C
Storage Temperature	-50...+80°C
Operating Relative Humidity (max)	95%
IP Rating	IP20
Certification	CE, RoHS
Warranty	36 Month (Return to base)

Mechanical

Housing	DIN mounted case (12 modules)
Material	Metal, Plastic
Dimensions, mm	210(D) x 105(H) x 75(W)
Weight	0.6 kg
Mounting	Power cabinet

Power & Electrical

Power supply	-90-270 VAC, 50/60 Hz
Max voltage and current on outputs	250 V, 5 A
Max voltage at inputs	250 V
Input Power (max)	5 W
Mains Fuse	0.5 A

Control / Data Connections

Control interface	DMX 512
Supported protocols	DMX 512, RDM
DMX data refresh rate	44 Hz

Configuration / Indication

Setup	DIP switchers, RDM
Indication	LEDs for DMX activity

Inputs / Outputs

DMX connectors	Terminal blocks 15 EDGVC
Relay outputs	8 (6 on/off, 2 changeover)
Voltage control inputs	16

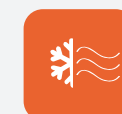
Full galvanic isolation
DMX interface
16 independent inputs
8 independent relay outputs
Built-in power supply



UltraStart



Permanent Laser Engraving



Natural Heat Convection



Galvanically Isolated Ports



Supports RDM

LED Drivers

LED drivers with DMX512/RS-485 input. Separate compact devices LEDGate Compact with wireless or cable DMX input, and DIN rail mount LEDGate DIN. Powered from 12/24 VDC source, LED drivers are capable to control and dim up to 8 output lines for direct connection to LED equipment: duralight, driverless LED luminaires, etc, with independent short-circuit protection on each channel. Thanks to innovative embedded algorithms, LEDGates provide smooth, stepless regulation in full range of intensity.

LEDGate DIN

Compact LED driver



LEDGate DIN is compact LED driver with DMX512/RS-485 input. Powered from 12/24 VDC source, LEDGate is capable to control and dim 4 or 8 output lines for direct connection with LED equipment: duralight, driverless LED luminaires, etc, with independent short-circuit protection on each channel. Thanks to innovative embedded algorithms, LEDGate provides a smooth, stepless regulation in full range of intensity. With no flickering.

DIN
series

Environmental

Operating Temperature	-40...+70°C
Storage Temperature	-50...+80°C
Operating Relative Humidity (max)	95%
IP Rating	IP20
Certification	CE, RoHS
Warranty	36 Month (Return to base)

Mechanical

Housing	DIN mounted case (8 modules)
Material	Metal, Plastic
Dimensions, mm	142(D) x 105(H) x 75(W)
Weight	0.45 kg
Mounting	Power cabinet

Power & Electrical

Power supply	12/24 VDC
Max current per channel	10 A
Total current on outputs	40 A
Input power (max)	1 kW
Mains Fuse	0.5 A

Control / Data Connections

Supported protocols	DMX512, RDM
Data refresh rate	44 Hz

Configuration / Indication

Setup	DIP switchers
Indication	LEDs for DMX activity

Inputs / Outputs

LED outputs	8
DMX512 interfaces	1
Additional port	RS-485
DMX connectors	Terminal blocks 15EDGVC

Smooth light regulation

Independent short-circuit protection on each channel

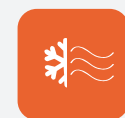
Direct connection with LED equipment



UltraStart



Permanent Laser Engraving



Natural Heat Convection



Galvanically Isolated Ports



Supports RDM

LEDGate Compact & Wireless

LEDGate Compact

Compact LED driver

LEDGate Compact is compact LED driver with DMX512 (DMX512/RS-485 for wireless) inputs. Powered from 12/24 VDC source, LEDGate is capable to control and dim 2 or 4 output lines for direct connection with LED equipment: duralight, driverless LED luminaires, etc, with independent short-circuit protection on each channel.

Wireless LEDGate Compact is equipped with 2 coaxial RP-SMA RF connector for antenna connection configurable to work on reception. Thanks to innovative embedded algorithms, LEDGate provides a smooth, stepless regulation in full range of intensity.



Compact
series

Environmental

Operating Temperature	-40...+70°C
Storage Temperature	-50...+80°C
Operating Relative Humidity (max)	95%
IP Rating	IP20
Certification	CE, RoHS
Warranty	36 Month (Return to base)

Mechanical

Housing	Surface mounted case
Material	Metal, Plastic
Dimensions, mm	86(D) x 38(H) x 54(W) 110(D) x 38(H) x 54(W) Wireless
Weight	0.18 kg 0.2 kg Wireless

Power & Electrical

Power supply	12/24 VDC
Max current per output	20 A
Input power (max)	500 W

Control / Data Connections

Control interface	DMX512, BeDMX
Transmission range (standart antenna)	100 m
DMX data refresh rate	44 Hz
Supported protocols	DMX512, BeDMX
Communication protocol	Bluetooth 5.0
RF banda	2.4 GHz

Configuration / Indication

Setup	Rotary switchers
Indication	LEDs for DMX activity

Inputs / Outputs

LED outputs	2 or 4
DMX512 interfaces	1
Connectors	Screw terminals
Wireless interface	1
Slave interface	1

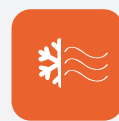
Smooth light regulation

Independent short-circuit protection on each channel

Direct connection with LED equipment



UltraStart



Natural Heat Convection



Galvanically Isolated Ports

Pixel Strip Drivers

Series of LED pixel strip controllers to map live effects, still images, and even videos on LED walls. Each pixel in an LED strip is individually controlled as a part of large matrix. 2 Ethernet ports and integrated splitter make it easy to chain devices and synchronize content live. You can use any live inputs to generate and trigger your effects in real time both for indoor and outdoor installations as the devices are IP65 class and waterproof.

PixelGate ARMA

Compact LED pixel strip driver



ArtNet/sACN to SPI controllers for pixel mapped indoor and outdoor LED strip installations. Two Ethernet ports and integrated switch provide cascability. Directly convert up to 16 DMX universes into SPI to control 2,730 RGB pixels supporting 8 separate LED outputs.

Power supplied to LEDs separately, from 5V to 48V. Outputs are configurable through web-based management page. Tough and compact waterproof enclosure (IP65) specifically crafted for outdoor use.

ARMA
series

Environmental

Operating Temperature	-40...+70°C
Storage Temperature	-50...+80°C
Operating Relative Humidity (max)	100%
IP Rating	IP65 for outdoor use
Certification	CE, RoHS
Warranty	36 Month (Return to base)

Mechanical

Housing	Solid case
Material	Metal
Dimensions, mm	115(D) x 55(H) x 90(W)
Weight	0.75 kg
Mounting	Surface, Truss

Power & Electrical

Power supply	5/12/24/48 VDC
--------------	----------------

Control / Data Connections

Control interface	ArtNet, ACN
Channels	8 SPI

Configuration / Indication

Setup	WEB Interface
Indication	LED for Ethernet activity

Inputs / Outputs

Control outputs	8, TTL 3/5V
Ethernet ports	2 10/100 Base-TX
Ethernet connectors	2 LSA-PLUS® connectors

Cascadable through integrated switch and 2 Ethernet ports

Die-cast, waterproof metal casing (IP65)

Support ArtNet and sACN

LEDs with power supply up to 48V

Support various LED types

Full protection from dust and smoke increases product lifetime

Power source 5/12/24/48 VDC



UltraStart



User-Friendly Web Interface



Natural Heat Convection



Highest Ingress Protection

LED strips support:

WS2811, WS2812B, WS2818, TM1809, UCS1903, UCS1903B, UCS1909, UCS1909B, UCS1912, UCS1912B, UCS2903, UCS2903S, UCS2909, UCS2912, INK1002, INK1003, LX1003, WS2801, WS2803, DM413, APA102, LPD8803, LPD8806

...more on request

Software Compatibility:

Elios

Madrix

LightJams

LightingPad

Jinx!

Luminair

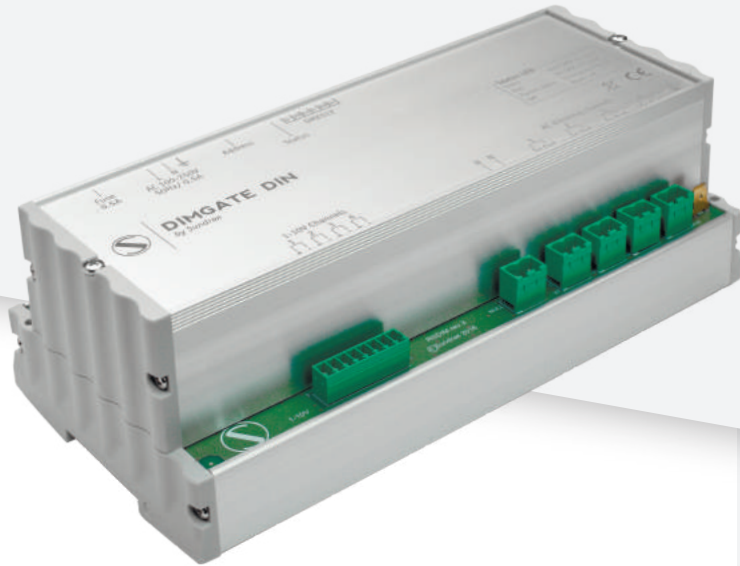
+ any control software that supports ArtNet

DMX to DALI

DMX to 1-10V

DimGate DIN

Hybrid DIN-rail dimmer



DimGate DIN is hybrid DIN-rail dimmer that converts DMX512 signal into 4 independent 110-230 VAC outputs up to 1.2 kW each to handle dimming of incandescent lamps. Additional 4 separate 1-10V (or 0-10V) outputs are supplied to integrate devices with 1-10V dimming drivers and electronic ballasts into DMX controlled surroundings.

With DIN rail mounting hassle-free installation and DMX input, DimGate DIN is ideal as indoor solution for mixed lighting control purposes in theatres, small venues, architectural installations, industrial, warehouse, and agricultural lighting.

DIN
series

Environmental

Operating Temperature	-40...+70°C
Storage Temperature	-50...+80°C
Operating Relative Humidity (max)	95%
IP Rating	IP20
Certification	CE, RoHS
Warranty	36 Month (Return to base)

Mechanical

Housing	DIN mounted case (12 modules)
Material	Metal, Plastic
Dimensions, mm	210(D) x 105(H) x 75(W)
Weight	0.85 kg
Mounting	DIN rail

Power & Electrical

Power supply	-90-250 VAC, 50/60 Hz
Input Power	5W
Mains Fuse	0.5 A

Control / Data Connections

Control interface	DMX512, RDM
Supported protocols	DMX 512, RDM
DMX data refresh rate	44 Hz

Configuration / Indication

Setup	DIP switchers, RDM
Indication	DMX status LED

Inputs / Outputs

DMX connectors	Terminal blocks
Relay outputs	4 AC and 4 analogue 1-10V
Number of DMX addresses	8

Two-in-one dimming methods

DIN rail mounting

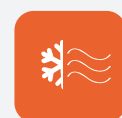
Independent phase inputs for dimmable channels 230V

Active analog outputs

1-10V/0-10V, with up to 100 drivers/ballasts connection capability



UltraStart



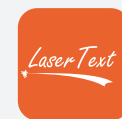
Natural Heat Convection



Galvanically Isolated Ports



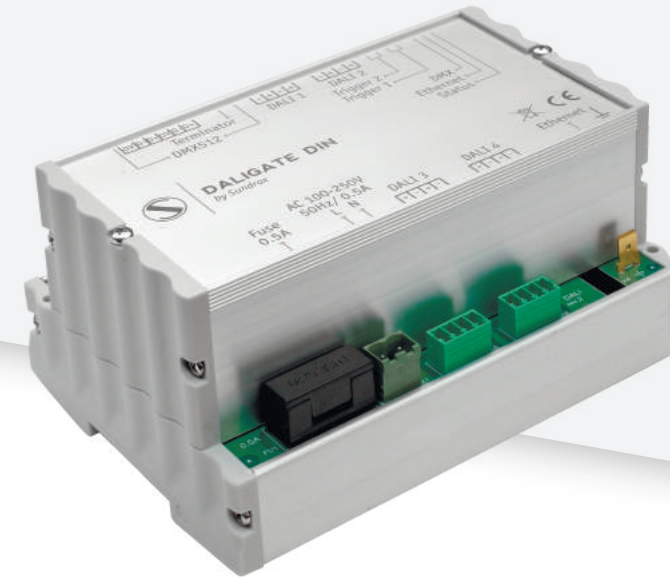
Supports RDM



Permanent Laser Engraving

DALIGate DIN

DMX to DALI converter



DALIGate DIN is DIN rail mounted converter that converts ArtNET/sACN/DMX signal into DALI protocol to include DALI lighting fixtures into controllable lighting network.

With DIN rail mounting hassle-free installation and ArtNET/sACN/DMX input, DALIGate DIN is ideal as indoor solution for mixed lighting control purposes in theatres, small venues, architectural installations, industrial, warehouse, and agricultural lighting.

DIN
series

Environmental

Operating Temperature	-40...+70°C
Storage Temperature	-50...+80°C
Operating Relative Humidity (max)	95%
IP Rating	IP20
Certification	CE, RoHS
Warranty	36 Month (Return to base)

Mechanical

Housing	DIN mounted case (8 modules)
Material	Metal, Plastic
Dimensions, mm	142(D) x 105(H) x 75(W)
Weight	0.45 kg
Mounting	Power cabinet

Power & Electrical

Power supply	-90-250 VAC, 50/60 Hz
Input Power	5W
Mains Fuse	0.5 A

Control / Data Connections

Supported protocols	DALI, DMX512, RDM, ArtNet I, II, III, IV/ sACN
DMX data refresh rate	44 Hz

Inputs / Outputs

DMX ports	1 isolated
DMX connectors	Terminal blocks 15 EDGVC
Controllable output lines	4
Ethernet port	10/100 Base-TX

Work with DMX, ArtNet and sACN

Converting options are channel-to-channel, channel-to-device, and channel-to-group

Custom grouping of lights

Automatically detect DALI lights in network through web interface with no extra software

Maximum surge protection – power supply optimized for voltage from 100 to 315 V

Full galvanic isolation of all ports

Alarm triggered pre-programmed scenarios

Test button support (fixtures test, device reset to default)

Fixture search mode without readdressing



UltraStart



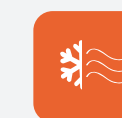
DMX Bi-Direct



User-Friendly Web Interface



Supports RDM



Natural Heat Convection



Galvanically Isolated Ports



Permanent Laser Engraving

series

Compact series

Unique Compact Series converters are the smallest on the market yet they provide a fair bit of premium bidirectional ArtNet/sACN to DMX and DMX to LED converting options. Compact series include ArtGates Compact that are installed into standard socket wall or floor plates, or into fixtures as OEM boards. LEDGates Compact are tiny DMX to LED drivers with wireless option available in OEM version as well.

All DMX ports are bidirectional i.e. may be configured as inputs or outputs. All ports are galvanically isolated. UltraStart Technology guarantees ready device in less than 3 seconds after power supply. RDM support. Some devices feature PoE power supply (802.15f).

ARMA series

Arma series are carefully crafted "offtrack" devices excellent for any outdoor installations under any weather conditions: from Arctic winters to Sahara's hottest dusty summers, successfully tested for tropicalization to work in the most humid areas. Extensive installations are easily handled by our trademark devices with 2 Ethernet ports which obviate the need of using Ethernet switches.

Natural heat convection and moulded 3mm space effective thick metal case with sealed connectors provide highest ingress protection (IP65). All DMX ports are bidirectional i.e. may be configured as inputs or outputs. All ports are galvanically isolated. UltraStart Technology guarantees ready device in less than 3 seconds after power supply. RDM support. Some devices feature PoE power supply (802.15f). Different wall and clamp mounting options.

Pro Series is special portfolio of 19" rackmounted (or clampmounted) professional DMX transceivers, DMX to ArtNet/sACN converters with fiber optic ports available pro switches, hybrids and splitters in smalldepth lightweight metal housing. From 2 to 8 ports per each device (up to 16 ports in 2unit Pro Deluxe series). Natural heat convection. All DMX ports are bidirectional i.e. may be configured as inputs or outputs. All ports are galvanically isolated.

UltraStart Technology guarantees ready device in less than 3 seconds after power supply. RDM support. Some devices feature PoE power supply (802.15f).

pro series



DIN series

Lightweight and compact DIN Series are the best choice for fixed cabinetbased installations with DIN rail mounting available. All the advantages of standard converters, designed in DIN cases. Spacesaving enclosures with resistant LaserText engraving. Natural heat convection. All DMX ports are bidirectional i.e. may be configured as inputs or outputs. All ports are galvanically isolated.

UltraStart Technology guarantees ready device in less than 3 seconds after power supply. 15EDGV Terminal Blocks provide ultrafast dismount opportunities (UltraLock).

Solid series

Solid series has been specifically designed for adverse environments, hardly accessible and excessively dusty indoor locations. Solid Series converters have proved their excellent resistance to mechanical impact and any kind of stage smoke. These series include wireless DMX or ArtNet/sACN/RDM transceivers/receivers, bidirectional DMX to ArtNet/sACN converters, as well as hybrid CrossGates (wireless DMX/ArtNet/sACN transmitter/receivers).

Natural heat convection and moulded 3mm space effective thick metal case with reinforced connectors provide high ingress protection (IP44). All ports are bidirectional i.e. may be configured as inputs or outputs. All DMX ports are galvanically isolated.

UltraStart Technology guarantees ready device in less than 3 seconds after power supply. Different wall and clamp mounting options. Some devices feature PoE power supply (802.15f).



UNDRAX
electronics

Sundrax Electronics, 2 Lakeside Drive, Park Royal,
London NW10 7FQ United Kingdom

+ 44 (0) 208 991 33 19

office@sundrax.com

www.sundrax.com