

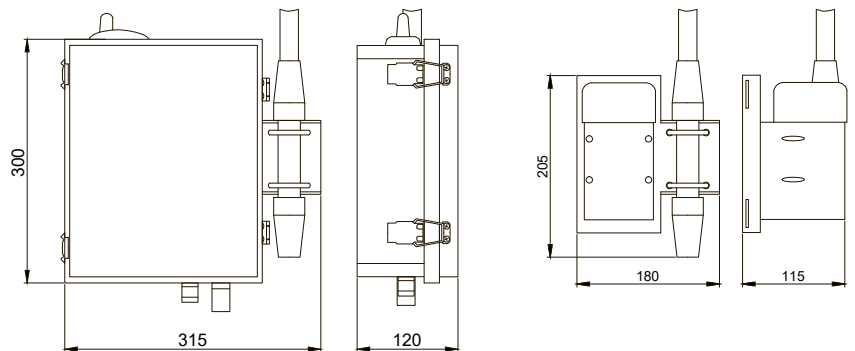


## LiTouch Base Station

LiTouch Base Station provides individual wireless remote control of luminaires equipped with LiTouch nodes. Base Station communicates as master using 868/915 MHz wireless interface. Base Stations creates and controls network of up to 1000 LiTouch nodes, maximum distance depends on terrain and density of buildings. Base Stations communicates with QULON software applications through GSM/GPRS/EDGE/3G or Ethernet to control each luminaire remotely, monitor their status and power consumption.

### Key Features

- Integrates wireless lighting networks into IoT software environment
- Long-range communication
- Compact size, easy to deploy
- Licence-free radio frequencies for LiTouch communication
- Independent from other wireless networks
- Works in severe climate conditions (IP66)



## QULON CMS

The QULON CMS is an extremely powerful yet flexible lighting management system that allows remote control of lighting infrastructures of any size and sort: We successfully deployed this system to control street lighting in entire cities, highways and tunnels but also industrial and warehouse lighting, airports, livestock farms, greenhouses, parking lots, train stations, leisure centres, parks and many more; It is composed of two different interfaces, a PC software featuring the most advanced programming functions and a web version to monitor and control your lighting assets on the go, together they offer a complete suite of tools for any kind of project and any kind of user.

# LiTouch Base Station

Version: 3.2  
20 Feb 2021

## Technical Specifications

### Mechanical

**Housing:** Plastic case  
**Material:** Metal, Plastic  
**Base Station dimensions, mm:**  
315(D) x 300(H) x 120(W)  
**Base Station lite dimensions, mm:**  
180(D) x 205(H) x 115(W)  
**Base Station Mass:** 7.0 kg  
**Base Station Lite Mass:** 3.0 kg  
**Mounting:** Pole or wall

### Power & Electrical

**Input Voltage:** ~100-270 VAC, 50/60 Hz or 12-30VDC\*  
**Input Power (max):** 10W (8W for Lite)

### Environmental

**Operating Temperature:** -40...+70°C  
**Storage Temperature:** -50...+80°C  
**Operating Relative Humidity (max):** 99%  
**IP Rating:** IP 66  
**Certification:** CE, RoHS  
**Warranty:** 36 month (return to base)

### Inputs / Outputs

**Ethernet port:** 1 (Base Station only)  
**868/915 MHz Antenna input:** 1

### Interfaces and Protocols

**Navigation:** GPS/GLONASS  
**Serial interface:** RS-485, CAN\*  
**Radio Channel:** GSM 850/900/1800/1900  
**Lan\*:** Ethernet 10/100 Base-TX  
**LiTouch communication:** ISM band 868/915 MHz  
**Max output power:** 16 dBm

### Configuration / Indication

**Setup:** Locally via Ethernet; Remote via GSM/GPRS/EDGE or 3G\*  
**Indication:** LEDs for GSM, Ethernet, RS-485 and LiTouch activity

### Package Contents

LiTouch Base Station (Lite)  
User guide  
868/915 MHz antenna  
Connectors kit

## Product Line

| Name                      | Modification | Product code   |
|---------------------------|--------------|----------------|
| LiTouch Base Station      | 868 MHz      | CAB-LT-131-868 |
| LiTouch Base Station      | 915 MHz      | CAB-LT-131-915 |
| LiTouch Base Station Lite | 868 MHz      | CAB-LW-021-868 |
| LiTouch Base Station Lite | 915 MHz      | CAB-LW-021-915 |



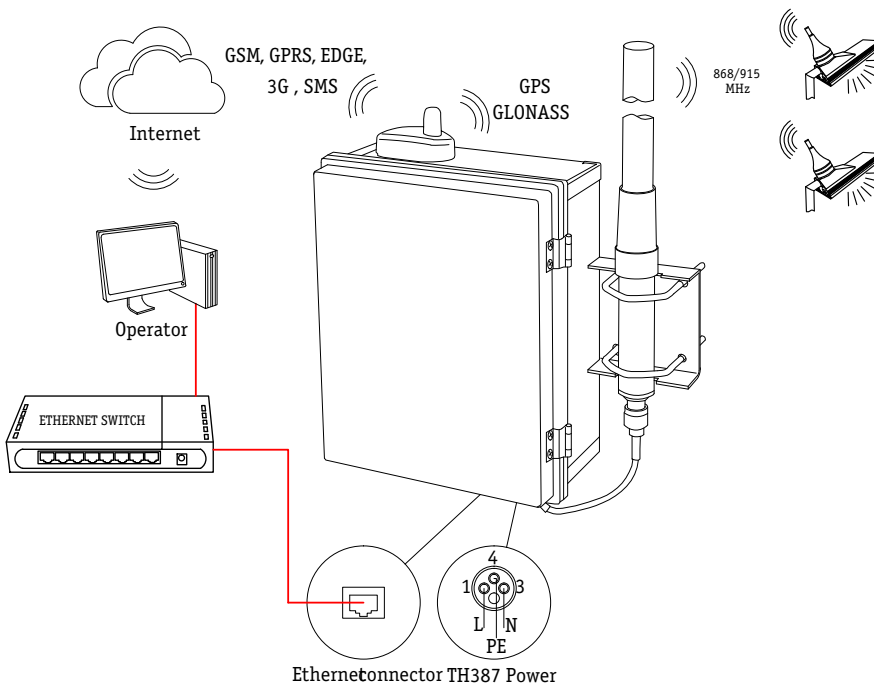
+ 44 (0) 208 991 33 19  
office@sundrax.com  
www.sundrax.com

# LiTouch Base Station

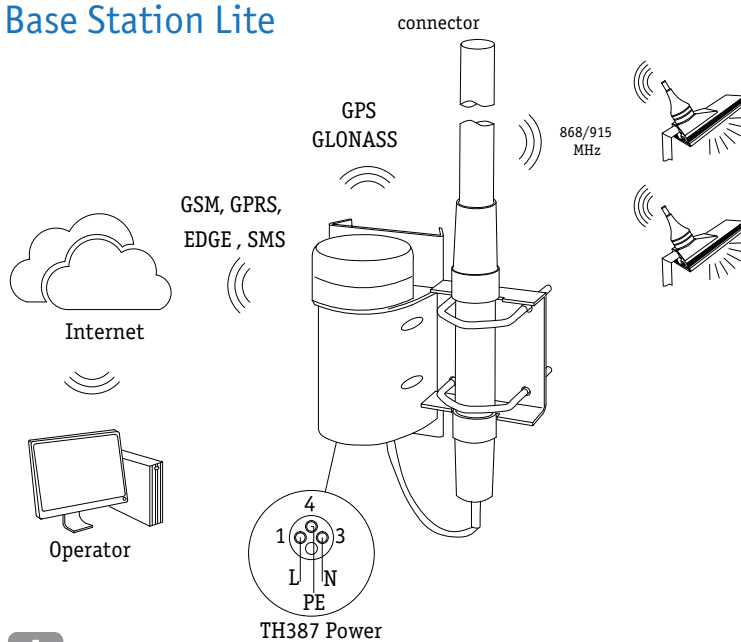
Version: 3.2  
20 Feb 2021

## Connection Scheme

### Base Station



### Base Station Lite



#### Disclaimer

To the best of our knowledge, the technical data contained herein is true and accurate at the date of issuance and is subject to change without prior notice. No liability accepted for errors or omissions. Always make sure to use the most recent release and contact Sundrax Electronics to verify correctness before placing your order.