



Daylight Sensor

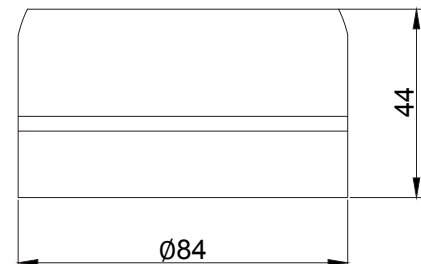


Special sensor for daylight regulation of city street lighting. Applied to fine-tune street lighting intensity and override pre-configured street lighting schedule in sensitive areas when the daylight level is below threshold due to fog, smoke, any other environmental conditions.

Daylight Sensor measures the intensity of light and transmits it to QULON management system via RS-485 or GSM (optional). Essential supplement sensor for smart cities to build advanced lighting control strategy.

Key Features

- Versions with open wires and NEMA plug
- Waterproof case IP65
- Embedded GPS/GLONASS receiver
- RS-485 interface
- Optional GSM interface



QULON CMS

QULON is a powerful yet extremely flexible Central Management System for street lighting. A combination of software applications and different hardware technologies that will offer you full control over any kind of lighting network enabling activity scheduling, real time faults notification, remote meter reading, performance analysis, custom dimming scenarios creation, maintenance workflow management and much more, increasing efficiency and cutting down costs.



Daylight Sensor

Technical Specifications

Mechanical

- Housing: Solid case
- Material: Plastic
- Dimensions, mm: 84(D) x 44(H) x 84(W)
- Mass: 0.2 kg
- Mounting: Luminaire case, pillar, e.t.c

Power & Electrical

- Input Voltage: ~100-270 VAC, 50/60 Hz
- Input Power (max): 5 W
- Max load Power: 1000 W

Environmental

- Operating Temperature: -40...+70°C
- Storage Temperature: -50...+80°C
- Operating Relative Humidity (max): 100%
- IP Rating: IP 65
- Certification: CE, RoHS
- Warranty: 36 Month (Return to base)

Inputs / Outputs

- Connectors: Leads, NEMA socket
- Sensors: Embedded light sensor

Interfaces and Protocols

- Navigation: GPS/GLONASS
- Interface: RS-485
- Radio Channel: GSM 850/900/1800/1900 (optional)
- Transmit Power Range(s):
Class 4 (+33dBm ± 2dB) for EGSM 850/900;
Class 1 (+30dBm ± 2dB) for GSM 1800/1900

Configuration / Indication

- Setup: Remote via software
- Indication: LED

Package Contents

- Daylight Sensor
- User guide

Product Line

Name	Modification	Product code
Daylight Sensor	NEMA connection, RS-485 interface	QUL-DSR-N-10
	NEMA connection, RS-485+GSM interface	QUL-DSR-N-11
	Wired connection (1.5m), RS-485	QUL-DSR-W-10
	Wired connection (1.5m), RS-485+GSM interface	QUL-DSR-W-11

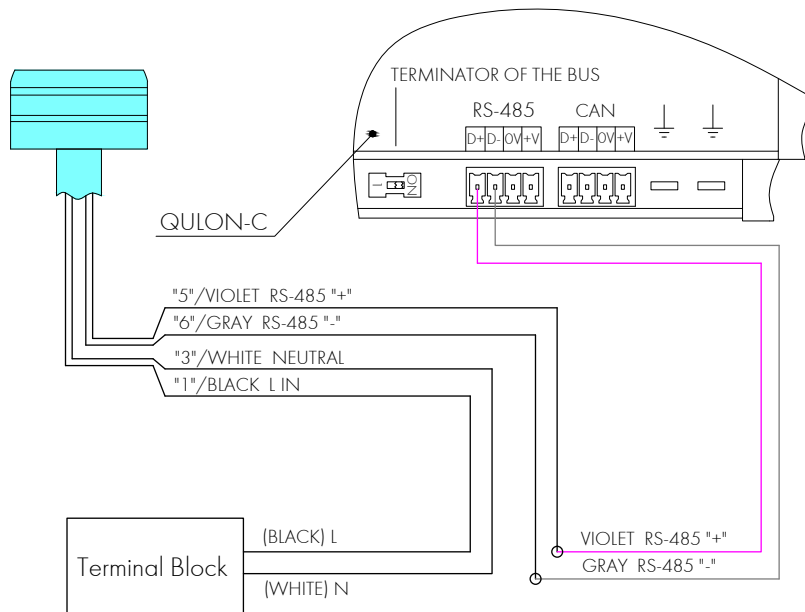


Sundrax Electronics,
6008, First Central 200,
2 Lakeside Drive, Park Royal, London
NW10 7FQ United Kingdom
+ 44 (0) 208 991 33 19
office@sundrax.com
www.sundrax.com

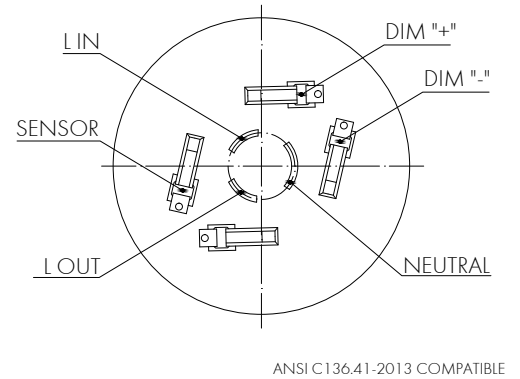
Daylight Sensor

Connection Scheme

Type "Wires"



Type "NEMA"



Accessories

Name	Product code
5-pin connector socket (NEMA)	QUL-ACC-NEM-135
7-pin connector socket (NEMA)	QUL-ACC-NEM-137
Motion sensor	QUL-ACC-RFM-112
Kit for detachable installation	QUL-ACC-RFM-141
Kit for mounting on the pillar	QUL-ACC-RFM-142
Kit for mounting on the wall	QUL-ACC-RFM-143
Kit for mounting on the lighting cabinet	QUL-ACC-RFM-144

Disclaimer

To the best of our knowledge, the technical data contained herein is true and accurate at the date of issuance and is subject to change without prior notice. No liability accepted for errors or omissions. Always make sure to use the most recent release and contact Sundrax Electronics to verify correctness before placing your order.



SUNDRAX
electronics
lighter than ever



plasa
member

Sundrax Electronics,
6008, First Central 200,
2 Lakeside Drive, Park Royal, London
NW10 7FQ United Kingdom
+ 44 (0) 208 991 33 19
office@sundrax.com
www.sundrax.com