



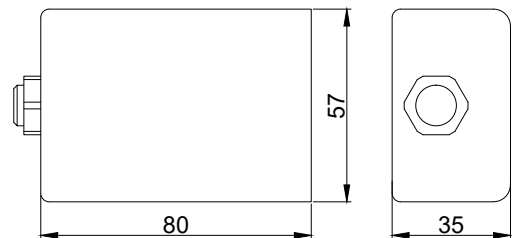
Simpline Node

Power Line Control management module

Powerline control unit. Mounted into luminaire housing or into the pole. Controlled by Central Gateway and QULON Simpline add-on through power line using Sundrax's proprietary Simpline technology to communicate luminaire node controller with central gateway. Provides dimming functionality via different interfaces (DALI, PWM, 1-10V) as well as individual load control (on/off). Compatible with 3rd party motion sensors. PLC interface operates on CENELEC EN 50065-1 (band-C) standard in 132.5kHz frequency band.

Advantages

- Versions with open wires, terminal blocks and OEM
- Available for installation into any luminaire case
- Luminaire or pole mounting
- Individual lighting control without extra wiring
- Motion sensor input
- Embedded triac for load switching on/off
- Work with luminaires up to 1000W
- Working capacity up to 305V



QULON CMS

The QULON CMS is an extremely powerful yet flexible lighting management system that allows remote control of lighting infrastructures of any size and sort: We successfully deployed this system to control street lighting in entire cities, highways and tunnels but also industrial and warehouse lighting, airports, livestock farms, greenhouses, parking lots, train stations, leisure centres, parks and many more; It is composed of two different interfaces, a PC software featuring the most advanced programming functions and a web version to monitor and control your lighting assets on the go, together they offer a complete suite of tools for any kind of project and any kind of user.

Simpline Node

Power Line Control management module

Version: 3.20
30 Apr 2021

Technical Specifications

Mechanical

Housing: solid case

Material: plastic

Dimensions, mm: 80(D) x 57(H) x 35(W)

Mass: 0.3 kg

Mounting: luminaire case or pole mounting

Power & Electrical

Input Voltage: ~100-270 VAC, 50/60 Hz

Max current: 3A

Anti-Jamming Filter: integrated (load power 20-250 W), external (load power 250-800 W)

Max load Power: 300 W (integrated anti-jamming filter); 1000 W (external anti-jamming filter)

Environmental

Operating Temperature: -40...+70°C

Storage Temperature: -50...+80°C

Operating Relative Humidity (max): 100%

IP Rating: IP 66

Certification: CE, RoHS

Warranty: 36 month (return to base)

Interfaces and Protocols

Control output interface: 1-10V/PWM, DALI

Communication with controller: CENELEC EN 50065-1 (band C)

Inputs/ Outputs

Connectors: leads, Terminal blocks 2EDGVC

Sensors: motion sensor input

Configuration/ Indication

Setup: remote via QULON C, C1 or C2 and QULON Simpline

Indication: LED (optional)

Package Contents

Simpline Node

Connectors kit (optional)

External Anti-Jamming filter (optional)

Product Line

Name	Modification	Product code
LiTouch Node	Terminal block, 0-10V/1-10V/PWM, max load 250W	QUL-PLC-T-PWM-1
	Terminal block, 0-10V/1-10V/PWM, max load 1000W	QUL-PLC-T-PWM-0
	Wire, 0-10V/1-10V/PWM, max load 250W	QUL-PLC-W-PWM-1
	Wire, 0-10V/1-10V/PWM, max load 1000W	QUL-PLC-W-PWM-0
	Terminal block, DALI, max load 250W	QUL-PLC-T-DALI-1
	Terminal block, DALI, max load 1000W	QUL-PLC-T-DALI-0
	Wire, DALI, max load 250W	QUL-PLC-W-DALI-1
	Wire, DALI, max load 1000W	QUL-PLC-W-DALI-0
	NEMA, 0-10V/1-10V/PWM/DALI, GPS/GLONASS, accelerometer	QUL-PLC-N-A
	NEMA, 0-10V/1-10V/PWM/DALI	QUL-PLC-N-B
	NEMA, 1-10V	QUL-PLC-N-C



+ 44 (0) 208 991 33 19
office@sundrax.com
www.sundrax.com

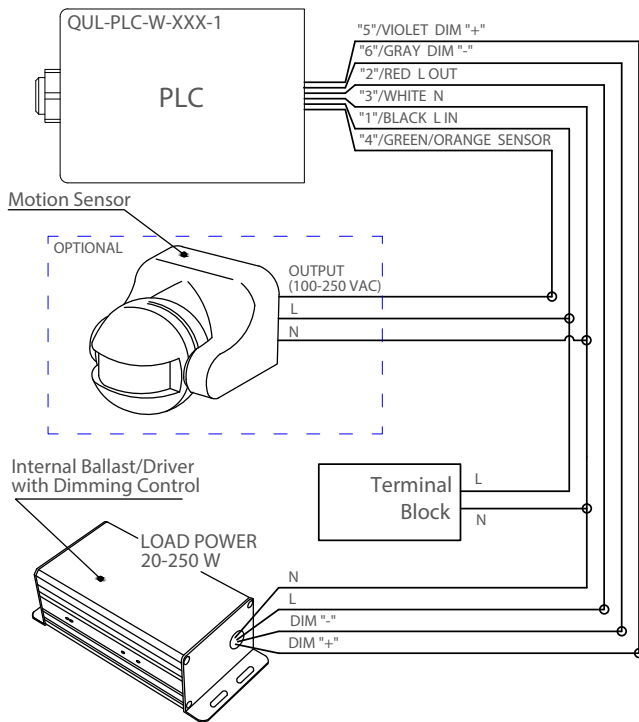
Simpline Node

Power Line Control management module

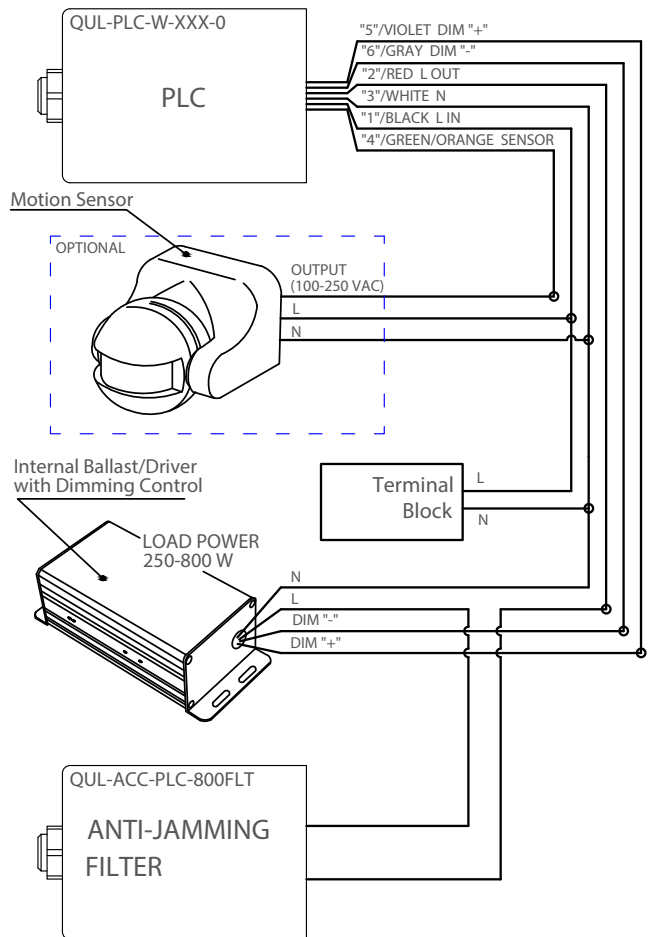
Version: 3.20
30 Apr 2021

Connection Scheme

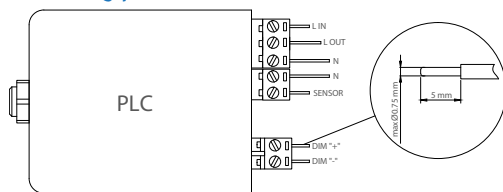
Type 1 "Wires+Integrated Anti-Jamming Filter"



Type 2 "Wires+External Anti-Jamming Filter"



Type 3 "Terminal block"



Disclaimer

To the best of our knowledge, the technical data contained herein is true and accurate at the date of issuance and is subject to change without prior notice. No liability accepted for errors or omissions. Always make sure to use the most recent release and contact Sundrax Electronics to verify correctness before placing your order.

Accessories

Name

- Simpline Luminaire Mounting Kit
- Simpline Pole Mounting Kit
- PIR Motion Sensor
- Microwave Motion Sensor
- Simpline External Anti-Jamming Filter, 4A

Product code

- ACC-MK-QPLC-LAMP
- ACC-MK-QPLC-LP
- ACC-OP-SENSI
- ACC-OP-SENSM
- ACC-AJF-1/4