



Central Control and Management Systems for your Road and Street Lighting

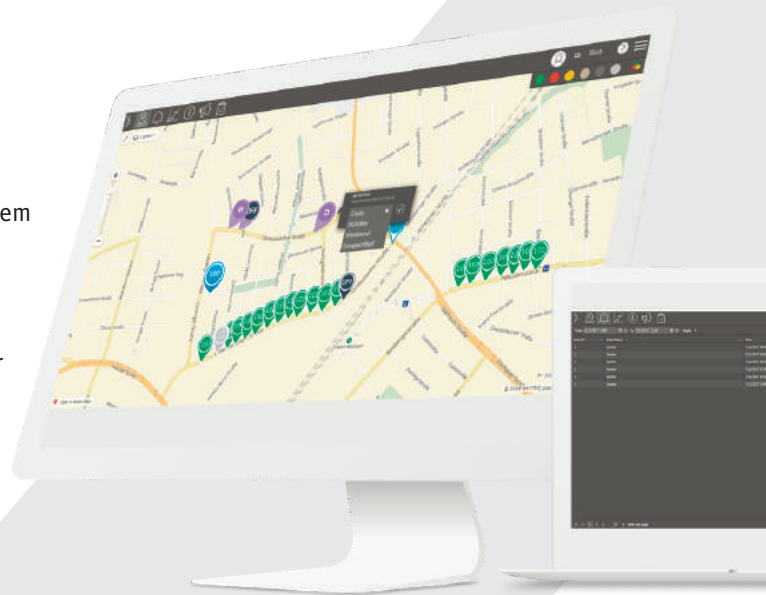
Qulon Software and Database

Functionality

Remote control, setup, diagnostic, programming, and scheduling of street lighting behavior. Real-time switching of power cabinets, individual luminaires or luminaire groups. Display of remote objects and their status on the integrated map. Power consumption and system performance reports in form of tables and graphs. Immediate identification of lamp failures and threshold exceeding. Scheduled report via email + alarm notifications through text messages. Lamp replacement forecasts and notifications. Full mimic diagrams of your lighting installations. Integration in third-party telemanagement systems. User access level management.

Reporting Capabilities

Flexible scheduled reporting tools.
Reports from various additional sensors such as weather and traffic.
Analytic tool that shows real-time information about power consumption and financial savings.



Unlimited users



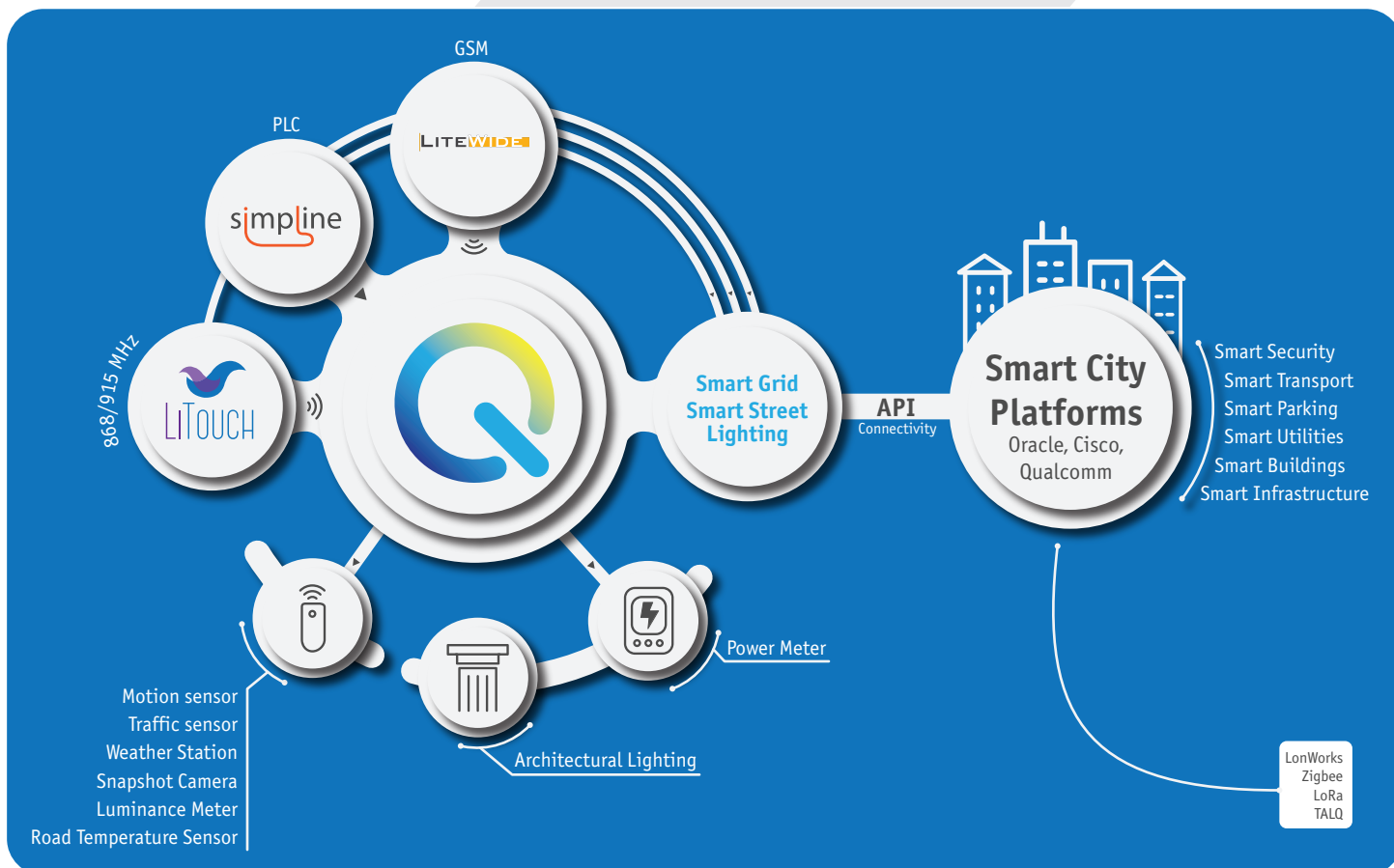
Free 2-day
software training



Initial setup,
testing and debugging



Online support



Sundrax Electronics,
2 Lakeside Drive, Park Royal,
London NW10 7FQ UK
+44 (0)20 8991 3319
office@sundrax.com
www.sundrax.com

QULON

Standard Plan

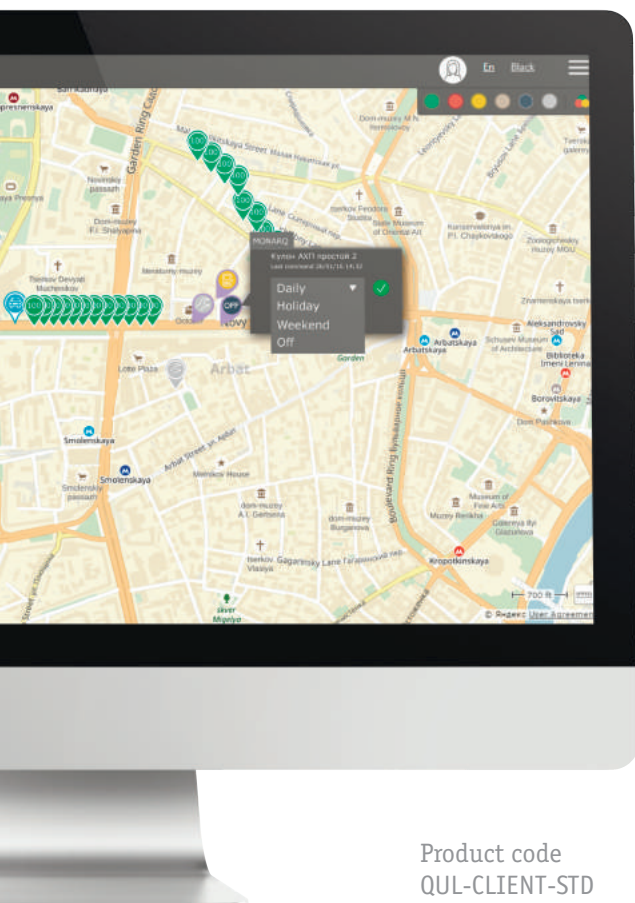
Cloud Software

QULON Software Standard plan is cloud-based software with full lighting management functionality. This software plan is intended to be used for relatively small street lighting projects. Generally applied to clients who do not have their own maintenance services, and no IT in-house services. QULON CMS is programmed by Sundrax, database is hosted by Sundrax. Deployment is quickest and hassle-free. QULON software works in any browser and updated weekly in a background mode. Standard plan is pay-per-light scheme.

System Requirements

Supported Maps

Google Maps, OpenStreetMap, Yandex, Microsoft Maps, Uploaded map files



Product code
QUL-CLIENT-STD



Sundrax Electronics,
2 Lakeside Drive, Park Royal, London NW10 7FQ UK
+44 (0)20 8991 3319
office@sundrax.com
www.sundrax.com



QULON

Professional Plan

Cloud + Local Software

QULON Software Professional plan is cloud-based software with full lighting management functionality plus Windows-based software for administrators, intended to be used for medium-scale projects. Generally applied to clients who have their own maintenance crews and/or help desk service. In addition to all features of Standard plan, clients can program QULON system themselves through Windows-based local software for administrators. Software is updated and backed-up in background mode as the database is hosted on Sundrax servers. Professional plan is fixed monthly or yearly payment.

System Requirements

Supported Maps

Google Maps, OpenStreetMap, Yandex, Microsoft Maps, Uploaded map files

Software Requirements

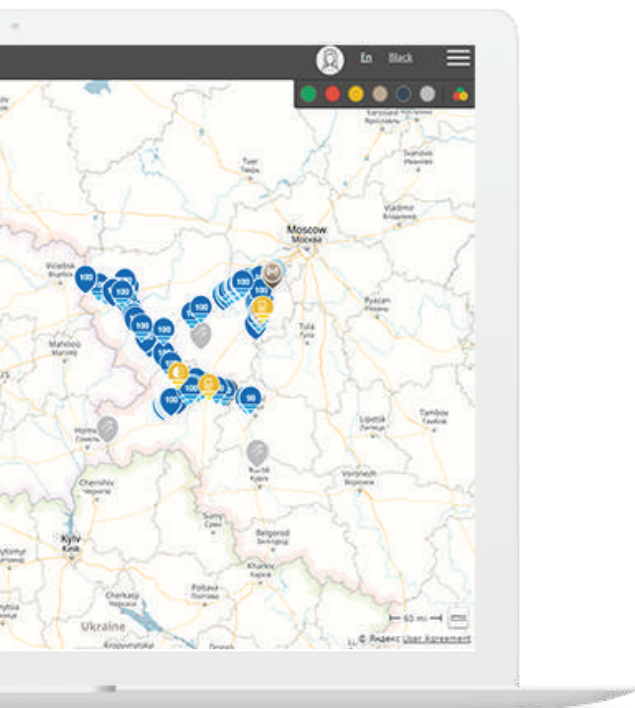
Operating System: Windows XP®, Vista®, 7, 8, 10
Browsers: Internet Explorer, Mozilla Firefox, Google Chrome, Opera, Safari

Minimal Hardware Requirements

Processor: Intel® Pentium® 4 or equivalent
Memory: 1 GB RAM
Hard Drive: 5 GB of free disk space

Platform Compatibility

Cloud Software: PC/Mac compatible, iOS/Android/Windows
tablet smartphone compatible
Local Software: Microsoft Windows compatible



Product code
QUL-CLIENT-PRO



Sundrax Electronics,
2 Lakeside Drive, Park Royal, London NW10 7FQ UK
+44 (0)20 8991 3319
office@sundrax.com
www.sundrax.com

Ultimate Plan

Cloud + Local Software + Server

QULON Software Ultimate plan is cloud-based software with full lighting management functionality plus Windows-based software for administrators hosted on a server located at customer's territory. The Software is installed and commissioned on customer's or 3rd party local servers. Alternatively Sundrax supplies server with pre-installed software and database. Support and software updates after commissioning exclusively by Sundrax or verified partners based on Customer Support Agreement. Ultimate pack requires deeper training, more qualified staff and in-house IT services to handle database hosting and system programming.

System Requirements

Supported Maps

Google Maps, OpenStreetMap, Yandex, Microsoft Maps, Uploaded map files

Software Requirements (Server)

Microsoft® IIS 7.0, Microsoft® SQL Server
Microsoft® .NET framework 4.0
Operating System: Windows Server® 2003 or higher

Minimal Hardware Requirements (Server)

Processor: Intel® Xeon® E5-2.2GHz or equivalent
Memory: 24 GB RAM
Hard Drive: 5 GB of free disk space

Platform Compatibility

Cloud Software: PC/Mac compatible, iOS/Android/Windows
tablet smartphone compatible
Local Software: Microsoft Windows compatible



Product code
QUL-SERVER-ULT
+ optional QULON server
with pre-installed software
QUL-SERVER-ULT

Standard

Relatively small street lighting projects, for clients who do not have their own maintenance services, no IT services are needed as well.

Professional

Medium-scale projects, for clients who render street light maintenance services onsite, or provide help desk services for other maintenance companies.

Ultimate

City-wide projects, for clients who render maintenance services and have their own IT services to handle database hosting and system programming. Recommended for clients whose servers are to be located at client's territory.

Cloud

Hassle-free pre-programmed system. Pay per light scheme. Minimum operation costs. Fastest implementation. Works in any browser. Weekly software updates.



Cloud + Local

Flexible programming options. Local setup functions are exercised through locally installed Admin Software. Requires staff that are more skilled. Database is hosted by Sundrax. Fixed payment. Weekly software updates.



Cloud + Local + Server

Server with pre-installed software and database is supplied. Full independence – entire system is hosted at your premises. Flexible programming options. Local setup functions are exercised through locally installed Admin Software. Deeper training is required. Updates and support based on Customer Support Agreement.





Central Control and Management Systems for your Road and Street Lighting

Live control	Standard	Professional	Ultimate
Live asset status on the map	●	●	●
Real-time switching and dimming	●	●	●
Remote diagnostics of network behaviour	●	●	●
Live event statistics	●	●	●
Scheduling	Standard	Professional	Ultimate
Pre-programming of available schedules	●	●	●
Select schedules and scenarios	●	●	●
Advanced scheduling		●	●
Create new scenarios for street lighting behaviour		●	●
Design new architectural lighting scenarios (via LightCoder software)		●	●
Configuring	Standard	Professional	Ultimate
Pre-configuring, testing and commissioning by Sundrax	●	●	●
Attach files and asset specifications	●	●	●
Add new assets and objects		●	●
Advanced configuring		●	●
Mimic diagrams of installations		●	●
Street lighting schematic layout		●	●
Reporting	Standard	Professional	Ultimate
Energy consumption and savings reports	●	●	●
Errors and warnings reports	●	●	●
Report scheduling	●	●	●
Maintenance costs reporting (from 2017)		●	●
Notifications	Standard	Professional	Ultimate
Text message alerts and notifications	●	●	●
Email alerts and notifications	●	●	●
User management	Standard	Professional	Ultimate
Unlimited users	●	●	●
Add new user roles		●	●
Task management (introducing in 2017)	Standard	Professional	Ultimate
Allocate assets to maintenance crews		●	●
Plan and manage onsite inspections and maintenance works		●	●
Automatic task assignment		●	●
Task manager application for field workers		●	●
Integration	Standard	Professional	Ultimate
Integration into other telemanagement systems and smart city platforms	●	●	●
Event-driven lighting control: motion sensors, luminance meter for tunnel lighting	●	●	●
Traffic sensor, weather station, road temperature, snapshot camera	●	●	●
Architectural lighting control: façade, holiday, decorations, art installations	●	●	●
Standalone solar-powered street lights	●	●	●
Software & hosting	Standard	Professional	Ultimate
SaaS cloud-based for daily management	●	●	●
Windows-based admin software		●	●
Server with pre-installed software hosted at client's location			●