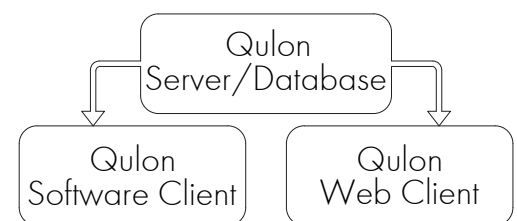


## Qulon Software and Database

Software and Web Client for Qulon CCMS

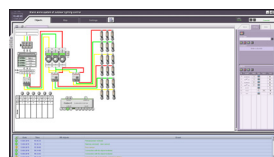
### Functionality

- Remote control, setup, diagnostic, programming, and scheduling of street lighting behavior.
- Real-time switching of power cabinets, individual luminaires or luminaire groups.
- Display of remote objects and their status on the integrated map
- Power consumption and system performance reports in form of tables and graphs.
- Immediate identification of lamp failures and threshold exceeding.
- Scheduled report via email + alarm notifications through text messages
- Lamp replacement forecasts and notifications
- Full mimic diagrams of your lighting installations
- Integration in third-party telemanagement systems



### Database key features

- Advanced reporting tools and performance graphs
- Easy web access
- Real-time power saving information
- User access level management
- Grouping / filtering / updating



### Reporting Capabilities

- Flexible scheduled reporting tools
- Reports from various additional sensors such as weather and traffic
- Analytic tool that shows real-time information about power consumption and financial savings



QULON CCMS by Sundrax Electronics provide extreme performance and reliability for fail-proof individual remote control of any luminaire type bringing adaptive lighting and is increasing or dimming the lights on demand. Professionally tailored on CCMS collects various electricity data from lighting cabinet (current, power factor, cumulative power (kWh/kVAh), active and apparent power, voltages, etc) and then sends it to server via GSM/GPRS/EDGE mobile network. All the programming of central module of CCMS is done remotely from the software. All created on/off/dimming schedules are stored in it so all equipment can operate without internet connection.)

# Qulon Software and Database

Software and Web Client for Qulon CCMS



## Data Export and IT Compatibility

QULON software components can be easily integrated into any existing municipal supervisory control and data acquisition systems to provide remote control of outdoor street and architectural lighting.

QULON software is capable to exchange data in different formats and via different protocols.



## System Requirements

### Platform Compatibility

- Qulon Web Client: PC/Mac compatible, iOS/Android/Windows tablet smartphone compatible
- Qulon Software: Microsoft Windows compatible

### Supported Maps

- Google Maps
- OpenStreetMap
- Yandex
- Microsoft Maps
- Uploaded map files

### Minimal Hardware Requirements

#### Server:

Processor: Intel® Xeon® E5-2.2GHz or equivalent

Memory: 24 GB RAM

Hard Drive: 5 GB of free disk space

#### Client:

Processor: Intel® Pentium® 4 or equivalent

Memory: 1 GB RAM

Hard Drive: 5 GB of free disk space

### Software Requirements

#### Server:

Microsoft® IIS 7.0

Microsoft® SQL Server

Microsoft® .NET framework 4.0

Operating System: Windows Server® 2003 or higher

#### Client:

Operating System: Windows XP®, Vista®, 7, 8, 10

Internet Explorer®

Mozilla Firefox

Google Chrome

Opera



**SUNDRAX**  
electronics  
lighter than ever

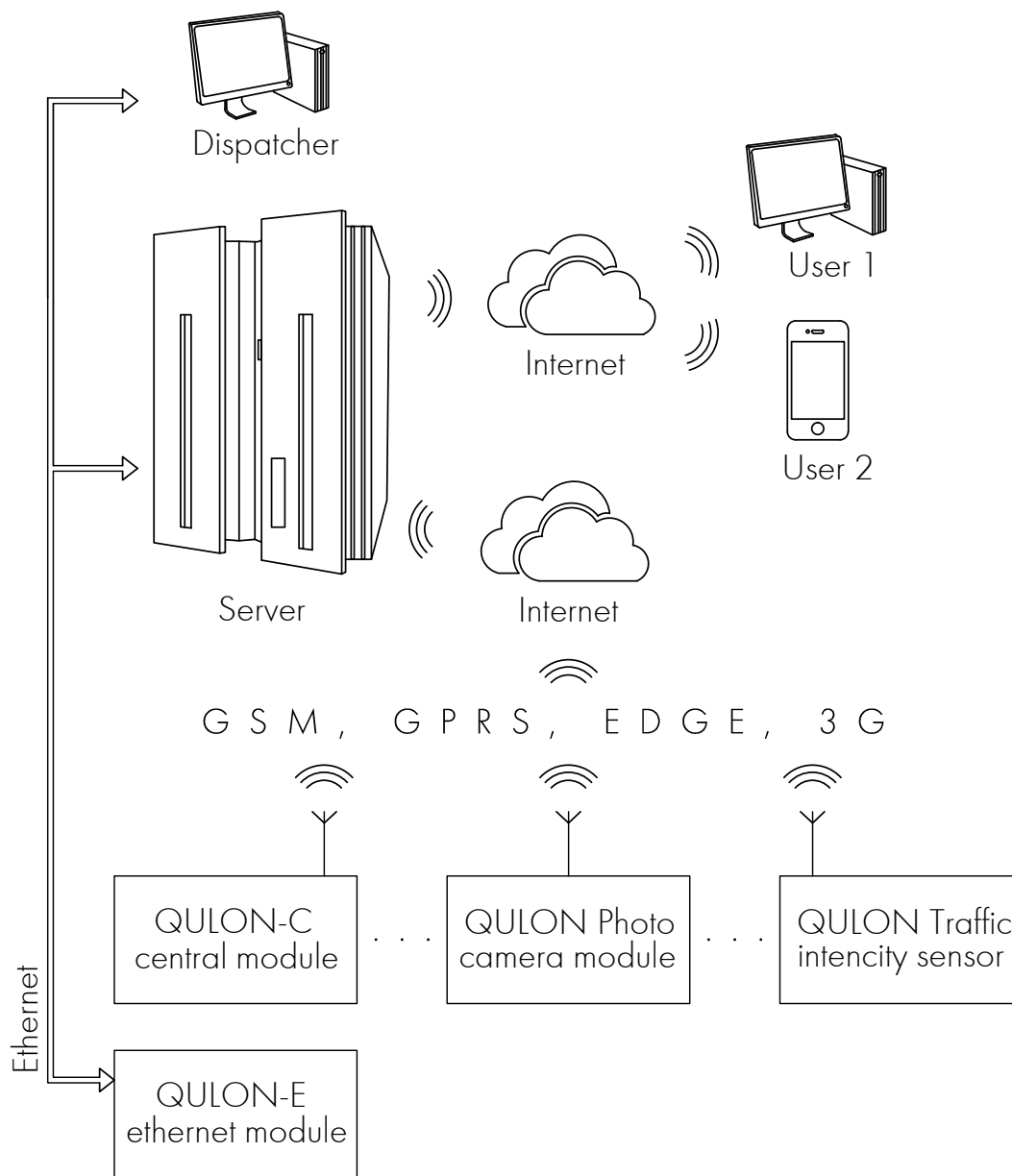


Sundrax Electronics,  
707, Westgate House,  
Westgate Road, London W5 1YY  
+ 44 (0) 208 991 33 19  
office@sundrax.com  
www.sundrax.com

# Qulon Software and Database

Software and Web Client for Qulon CCMS

## Network Architecture



## Product Line

### Name

QULON Software, STANDARD plan  
QULON Software, PROFESSIONAL plan  
QULON Software, ENTERPRISE plan  
QULON Software, MEGACITY plan

### Product code

QUL-CLIENT-STD  
QUL-CLIENT-PRO  
QUL-CLIENT-ENT  
QUL-CLIENT-MEGA

#### Disclaimer

To the best of our knowledge, the technical data contained herein is true and accurate at the date of issuance and is subject to change without prior notice. No liability accepted for errors or omissions. Always make sure to use the most recent release and contact Sundrax Electronics to verify correctness before placing your order.



**SUNDRAX**  
electronics  
lighter than ever



Sundrax Electronics,  
707, Westgate House,  
Westgate Road, London W5 1YY  
+ 44 (0) 208 991 33 19  
office@sundrax.com  
www.sundrax.com