



LiTouch Base Station

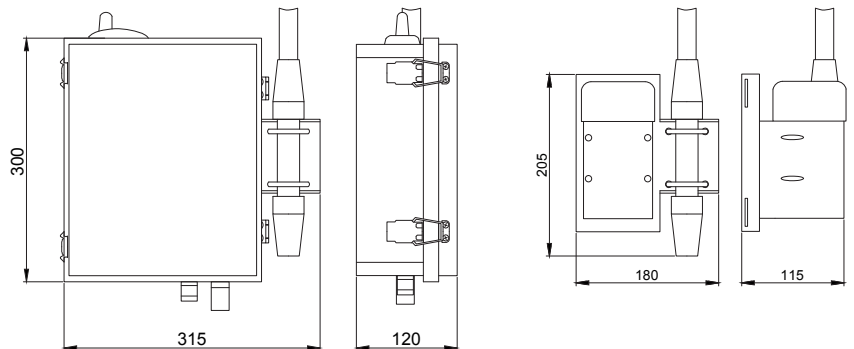


LiTouch Base Station provides individual wireless remote control of luminaires equipped with LiTouch nodes. Base Station communicates as master using 868/915 MHz wireless interface.

Base Stations creates and controls network of up to 1000 LiTouch nodes, maximum distance depends on terrain and density of buildings. Base Stations communicates with QULON software applications through GSM/GPRS/EDGE/3G or Ethernet to control each luminaire remotely, monitor their status and power consumption.

Key Features

- Integrates wireless lighting networks into IoT software environment
- Long-range communication
- Compact size, easy to deploy
- Licence-free radio frequencies for LiTouch communication
- Independent from other wireless networks
- Works in severe climate conditions (IP65)



QULON CMS

QULON is a powerful yet extremely flexible Central Management System for street lighting. A combination of software applications and different hardware technologies that will offer you full control over any kind of lighting network enabling activity scheduling, real time faults notification, remote meter reading, performance analysis, custom dimming scenarios creation, maintenance workflow management and much more, increasing efficiency and cutting down costs.



LiTouch Base Station

Technical Specifications

Mechanical

- Housing: Plastic case
- Material: Metal, Plastic
- Base Station dimensions, mm: 315(D) x 300(H) x 120(W)
- Base Station lite dimensions, mm: 180(D) x 205(H) x 115(W)
- Base Station Mass: 7.0 kg
- Base Station Lite Mass: 3.0 kg
- Mounting: Pole or wall

Power & Electrical

- Input Voltage: ~100-270 VAC, 50/60 Hz or 12-30VDC*
- Input Power (max): 10W (8W for Lite)

Environmental

- Operating Temperature: -40...+70°C
- Storage Temperature: -50...+80°C
- Operating Relative Humidity (max): 99%
- IP Rating: IP 65
- Certification: CE, RoHS
- Warranty: 36 Month (Return to base)

Inputs / Outputs

- Ethernet port: 1 (Base Station only)
- 868/915 MHz Antenna input: 1

Interfaces and Protocols

- Navigation: GPS/GLONASS
- Serial interface: RS-485, CAN*
- Radio Channel: GSM 850/900/1800/1900
- Lan*: Ethernet 10/100 Base-TX
- LiTouch communication: ISM band 868/915 MHz
- Max output power: 16 dBm

Configuration / Indication

- Setup: Locally via Ethernet; Remote via GSM/GPRS/EDGE or 3G*
- Indication: LEDs for GSM, Ethernet, RS-485 and LiTouch activity

Package Contents

- LiTouch Base Station (Lite)
- User guide
- 868/915 MHz antenna
- Connectors kit

*-not available for lite version

Product Line

Name	Modification	Product code
LiTouch Base Station	868 MHz	CAB-LT-131-868
LiTouch Base Station	915 MHz	CAB-LT-131-915
LiTouch Base Station Lite	868 MHz	CAB-LW-021-868
LiTouch Base Station Lite	915 MHz	CAB-LW-021-915



UNDRAX
electronics
lighter than ever



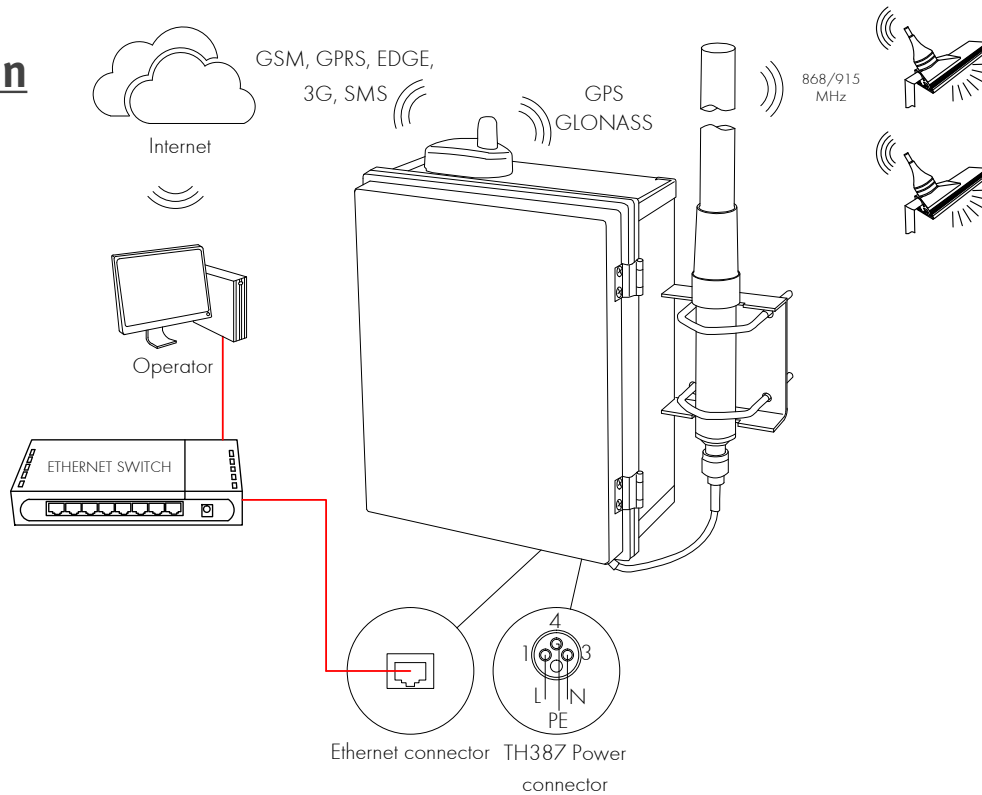
plasa
member

Sundrax Electronics,
6008, First Central 200,
2 Lakeside Drive, Park Royal, London
NW10 7FQ United Kingdom
+ 44 (0) 208 991 33 19
office@sundrax.com
www.sundrax.com

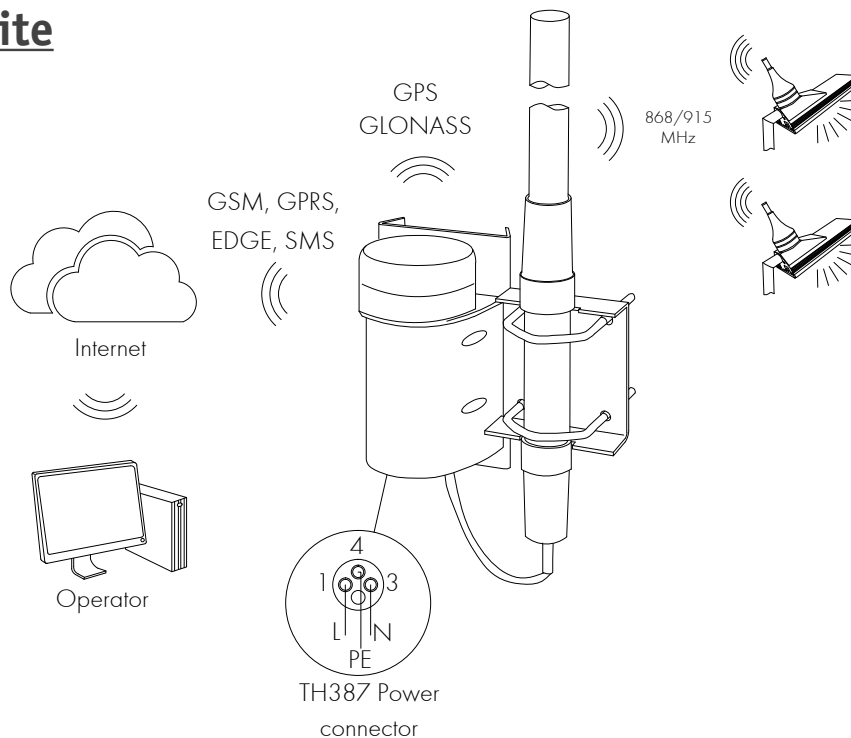
LiTouch Base Station

Connection Scheme

Base Station



Base Station Lite



Disclaimer

To the best of our knowledge, the technical data contained herein is true and accurate at the date of issuance and is subject to change without prior notice. No liability accepted for errors or omissions. Always make sure to use the most recent release and contact Sundrax Electronics to verify correctness before placing your order.



SUNDRAX
electronics
lighter than ever



plasa
member

Sundrax Electronics,
6008, First Central 200,
2 Lakeside Drive, Park Royal, London
NW10 7FQ United Kingdom
+ 44 (0) 208 991 33 19
office@sundrax.com
www.sundrax.com