



## LiteWide Node

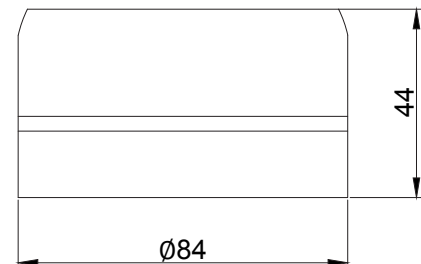
GSM Luminary Controller



LiteWide – decentralized wireless management system for territories with high density of buildings or mountainous terrain, and for regions where legislation prohibits using radio control. Each LiteWide node has built-in GSM and connects directly to the server. The lights are programmed straight from software without any intermediate gateways. LiteWide takes advantage from existing GSM network which leads to quicker and easier deployment.

### Key Features

- Versions with open wires and NEMA plug
- Waterproof case IP65
- Individual lighting control without additional wires
- Embedded luminance sensor
- Embedded GSM antenna
- Embedded GPS/GLONASS receiver
- Embedded triac for load switching on/off
- Scheduled on/off and dimming
- Automatic node positioning on the map
- Motion sensor input



### QULON CMS

QULON is a powerful yet extremely flexible Central Management System for street lighting. A combination of software applications and different hardware technologies that will offer you full control over any kind of lighting network enabling activity scheduling, real time faults notification, remote meter reading, performance analysis, custom dimming scenarios creation, maintenance workflow management and much more, increasing efficiency and cutting down costs.



# LiteWide Node

GSM Luminary Controller

## Technical Specifications

### Mechanical

- Housing: Solid case
- Material: Plastic
- Dimensions, mm: 84(D) x 44(H) x 84(W)
- Mass: 0.2 kg
- Mounting: Luminaire case, pillar, e.t.c

### Power & Electrical

- Input Voltage: ~100-270 VAC, 50/60 Hz
- Input Power (max): 5 W
- Max load Power: 1000 W

### Environmental

- Operating Temperature: -40...+70°C
- Storage Temperature: -50...+80°C
- Operating Relative Humidity (max): 100%
- IP Rating: IP 65
- Certification: CE, RoHS
- Warranty: 36 Month (Return to base)

### Inputs / Outputs

- Connectors: Leads, NEMA socket
- Sensors: Motion sensor input, Embedded luminance sensor

### Interfaces and Protocols

- Control output interface: 1-10 V/ PWM, DALI
- Navigation: GPS/GLONASS
- Radio Channel: GSM 850/900/1800/1900
- Transmit Power Range(s):  
Class 4 (+33dBm ± 2dB) for EGSM 850/900;  
Class 1 (+30dBm ± 2dB) for GSM 1800/1900

### Configuration / Indication

- Setup: Remote via software
- Indication: LED

### Package Contents

- LiteWide Node
- User guide

## Product Line

Name	Modification	Product code
LiteWide Node	NEMA connection, DALI interface	QUL-N-DALI
	NEMA connection, PWM interface	QUL-N-PWM
	Wired connection (1.5m), DALI interface	QUL-W-DALI
	Wired connection (1.5m), PWM interface	QUL-W-PWM



**UNDRAX**  
electronics  
lighter than ever



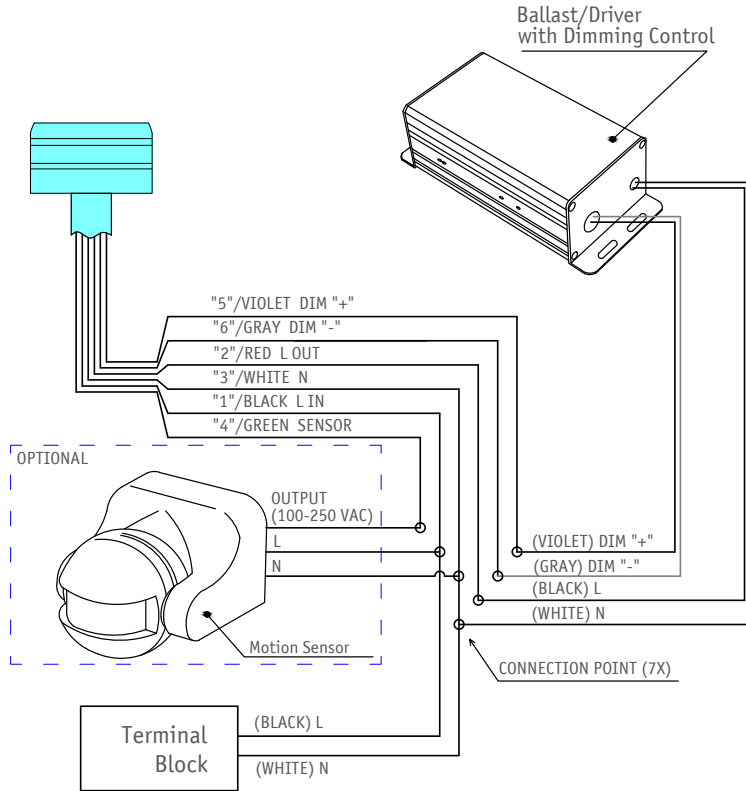
Sundrax Electronics,  
6008, First Central 200,  
2 Lakeside Drive, Park Royal, London  
NW10 7FQ United Kingdom  
+ 44 (0) 208 991 33 19  
office@sundrax.com  
www.sundrax.com

# LiteWide Node

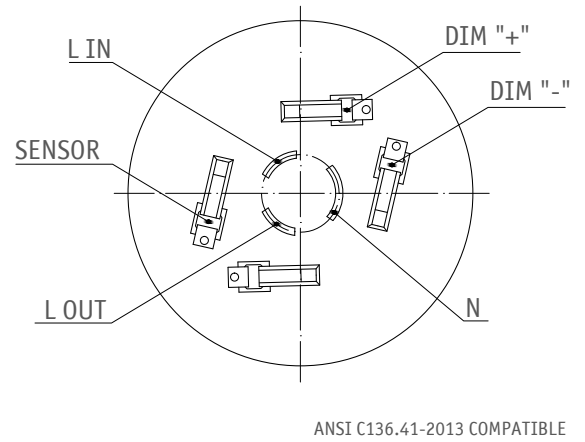
GSM Luminary Controller

## Connection Scheme

### Type "Wires"



### Type "NEMA"



## Accessories

Name	Product code
5-pin connector socket (NEMA)	QUL-ACC-NEM-135
7-pin connector socket (NEMA)	QUL-ACC-NEM-137
Motion sensor	QUL-ACC-RFM-112
Kit for detachable installation	QUL-ACC-RFM-141
Kit for mounting on the pillar	QUL-ACC-RFM-142
Kit for mounting on the wall	QUL-ACC-RFM-143
Kit for mounting on the lighting cabinet	QUL-ACC-RFM-144

**Disclaimer**

To the best of our knowledge, the technical data contained herein is true and accurate at the date of issuance and is subject to change without prior notice. No liability accepted for errors or omissions. Always make sure to use the most recent release and contact Sundrax Electronics to verify correctness before placing your order.



**SUNDRAX**  
electronics  
lighter than ever



**plasa**  
member

Sundrax Electronics,  
6008, First Central 200,  
2 Lakeside Drive, Park Royal, London  
NW10 7FQ United Kingdom  
+ 44 (0) 208 991 33 19  
office@sundrax.com  
www.sundrax.com